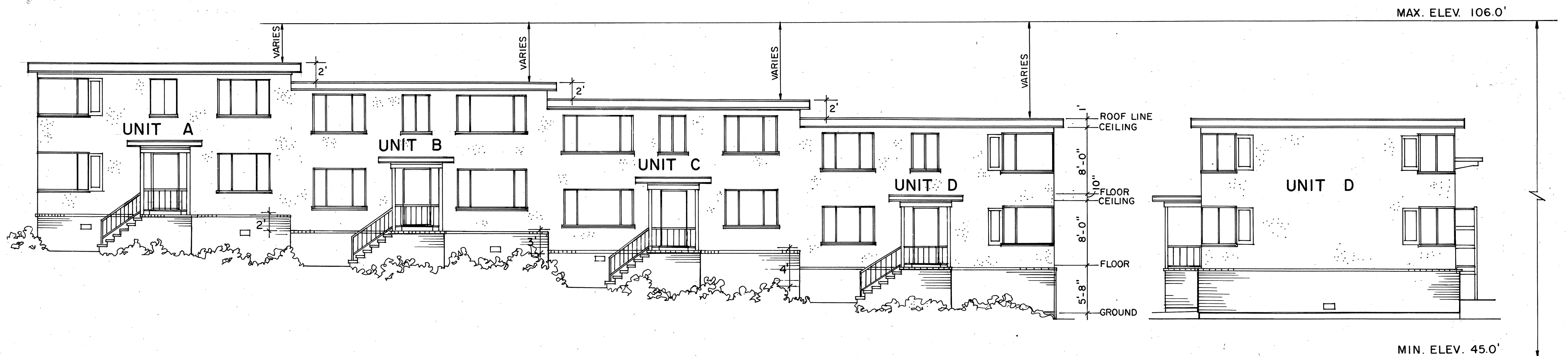


EXHIBIT 'C'

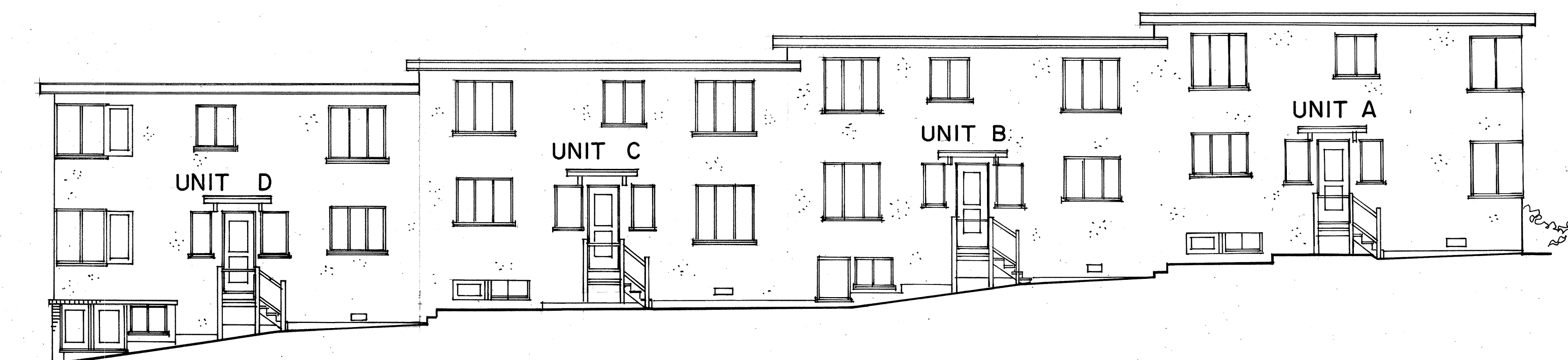


WEST ELEVATION

1/8" = 1'-0"

SOUTH ELEVATION

1/8" = 1'-0"

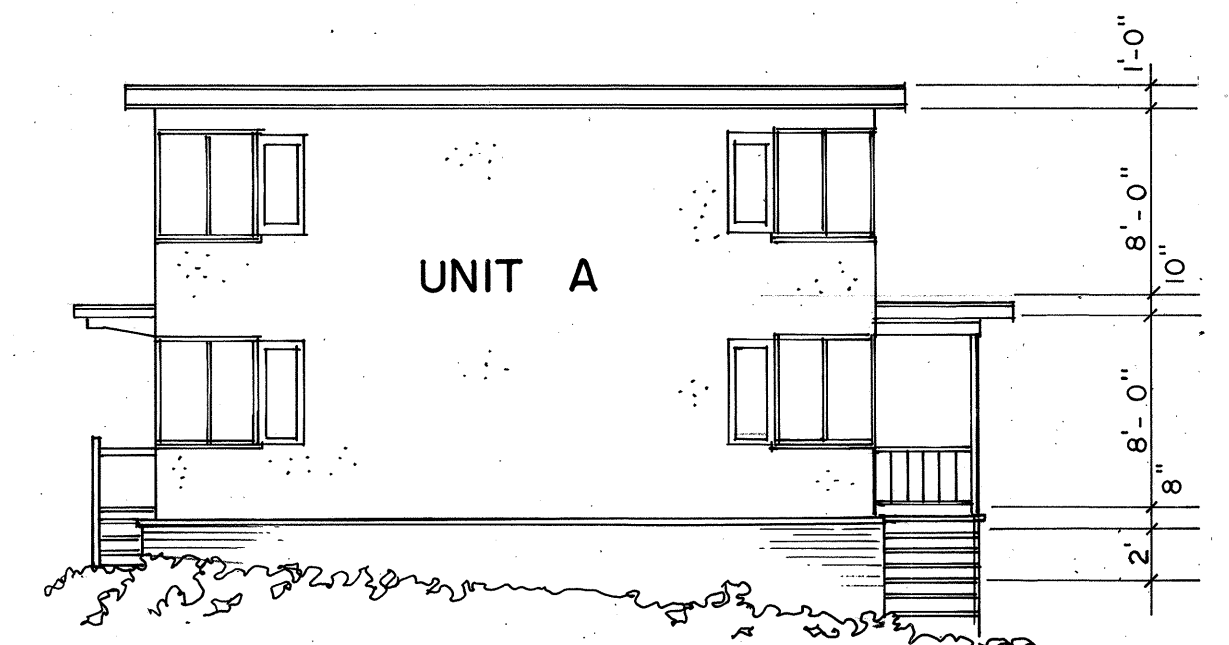


POINT 'A' SEE
EXHIBIT 'B'

EAST ELEVATION

1/8" = 1'-0"

NOTE:
ELEVATION SHOWN ARE BASED UPON
CITY OF OAKLAND DATUM.



NORTH ELEVATION

1/8" = 1'-0"



SHEET TWO OF THREE

EXP. 3-31-1990

A CONDOMINIUM PROJECT

84-2230B

PM 5316

MAP BK 178

PG 78