

Verse 1

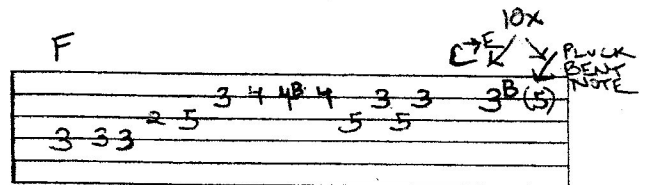
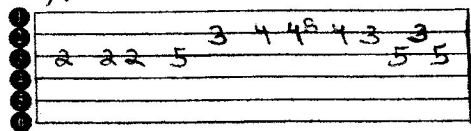
A5 ← **PUNK** F5
 janie alway said i was a mess
 G5
 sorry bout that mess **SKA** → D-
 C ← **REGGAE** A-
 i made her bleed i'm planting my seed
 G
 still i knew she could take it
 C A-
 if i opened up the rhythm i knew it could make it
 F G C
 but i hope her parents love her so

SEED
 - SUBLINE -

Verse 2

A5 ← **PUNK** F5
 feelin all the acid on the brain
 G5
 still i got that frame
 C ← **REGGAE** A-
 i made her bleed yeah she wants that lovin' you see
 D- G
 well if you live you wanna give or get old
 C A-
 and if you never knew that we get old
 D- G
 you live it up you live it up you get old
 C ← **SKA** A-
 believe me when i say
 F G
 its' the same shit everyday
PUNK → C5 A5
 but i got to know my place
 D5

BASS PLAYS SOLO A MINOR PENTATONIC



Verse 3

A5 ← **PUNK** F5
 G5 billyed backed in 1983
 G5
 what did you do for me
REGGAE → C A- **SKA** → D-
 i made her bleed i'm planting my seed
 G
 i knew we could make it
 C A-
 i only knew that the bitch would break it yeah
 F G
 i hope her parents love her so
 A- HOLD CHORDS 2x LONGER → F G
 my god look at me if he had to go
PUNK C5 A5
 i know i'm barely lovin' my holy creed
 D5 G5
 you never knew that was what you need
 C5 A5
 oh my god honestly
 D5 G5
 believe it or not its a disease
 F5 G5
 well i hope her parents love her
 Bb5 F5 A5
 i hope her parents love her so

