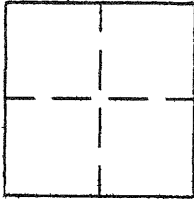


APN No. 85A - 2901 - - - - - (Optional)Document Number CR 1311City of UnincorporatedCounty of ALAMEDA, CaliforniaBrief Legal Description Monuments shown on Rec. of Survey No. 578 (11 R.S. 4)

## CORNER TYPE

Government Corner ☐ Control ☒  
 Meander ☐ Property ☐  
 Rancho ☐ Other ☐  
 Date of Survey October 31, 1999

COORDINATES  
(Optional)

N. \_\_\_\_\_  
 E. \_\_\_\_\_  
 Zone \_\_\_\_\_ Datum \_\_\_\_\_  
 Elev. \_\_\_\_\_

Corner - Left as found ☐ Found and tagged ☐ Established ☐ Reestablished ☐ Rebuilt ☒

In compliance with Section 8771 of the Professional Land Surveyors' Act, this corner record is being filed to  
 ESTABLISH REESTABLISH the position of an existing monument PRIOR / SUBSEQUENT \_\_\_\_\_  
 to street or highway reconstruction. (Use this portion only when applicable.)

Identification and type of corner found: Evidence used to identify or procedure used to establish or reestablish the corner:

Found Railroad Spikes shown on Rec. of Survey No. 578

A description of the physical condition of the monument as found and as set or reset:

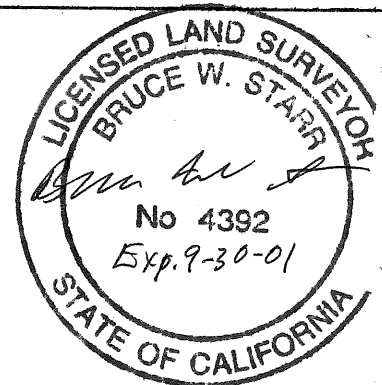
Set Spreaders as shown and Set Punch mark on  
 new concrete Monument which replaces spikes

## SURVEYOR'S STATEMENT

This Corner Record was prepared by me or under my direction in conformance with

the Land Surveyors' Act on Oct. 31, 1999.

Signed Bruce W. Starr L.S. or ~~REG.~~ Number 4392

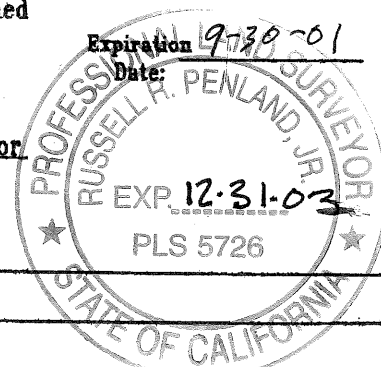


## COUNTY SURVEYOR'S STATEMENT

This Corner Record was received 1-10-2000 and examined

and filed 1-13-2000.

Signed Russell R. Penland, Jr. Title Deputy County Surveyor



County Surveyor's Comment \_\_\_\_\_

CL .36 is Gone  
N 39° 30' 19" E  
13.59

Scale: 1"=100'

SEE DETAIL

289.18

ROAD

N 4° 43' 28" W

Found R.R. Spike at  
Ala. Co. Sta. 48+58.94

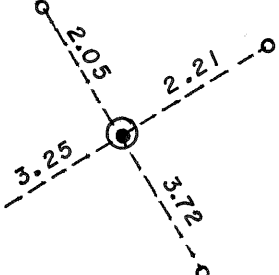
N 30° 50' 20" W

PALOMARE S

610.68

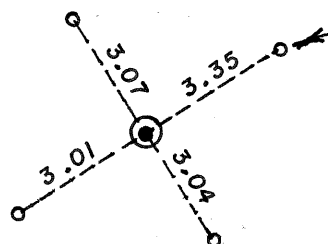
Found Iron Bolt  
C-L 33

10.76  
N 75° 24' 49" E



Set 4 Nails with brass tag "L.S. 4392" from  
R.R. Spike shown found on Rec. of Survey  
No. 578 ( Bk. II , R. S. , Pg. 4 ) at Ala. Co.  
Sta. 45+69.77

Set 4 Nails with brass tag "L.S. 4392" from  
R.R. Spike shown found on Rec. of Survey No. 578  
( Bk. II , R. S. , Pg. 4 ) at Ala. Co. Sta. 54+69.52



SEE DETAIL