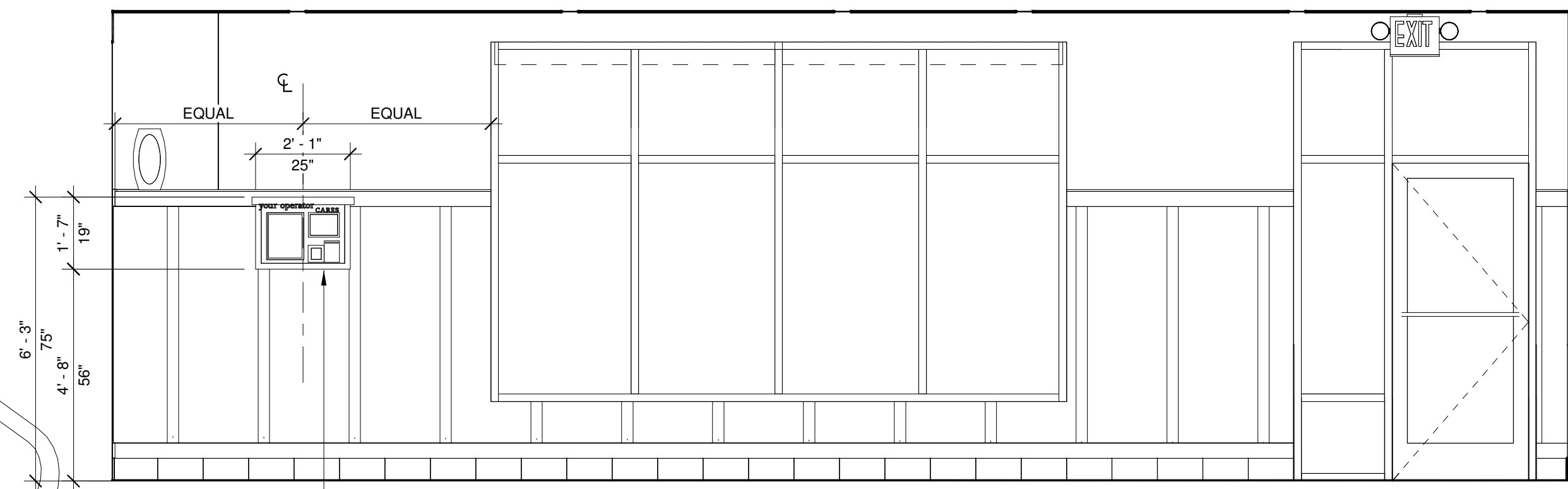
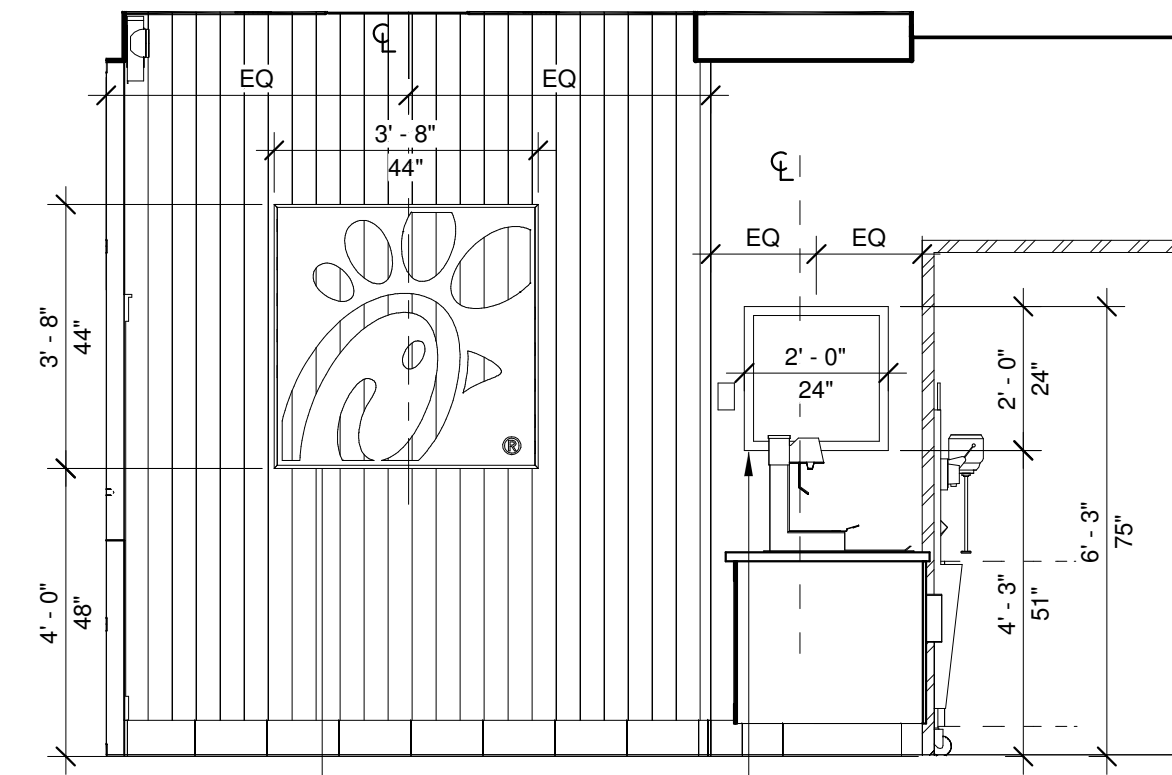


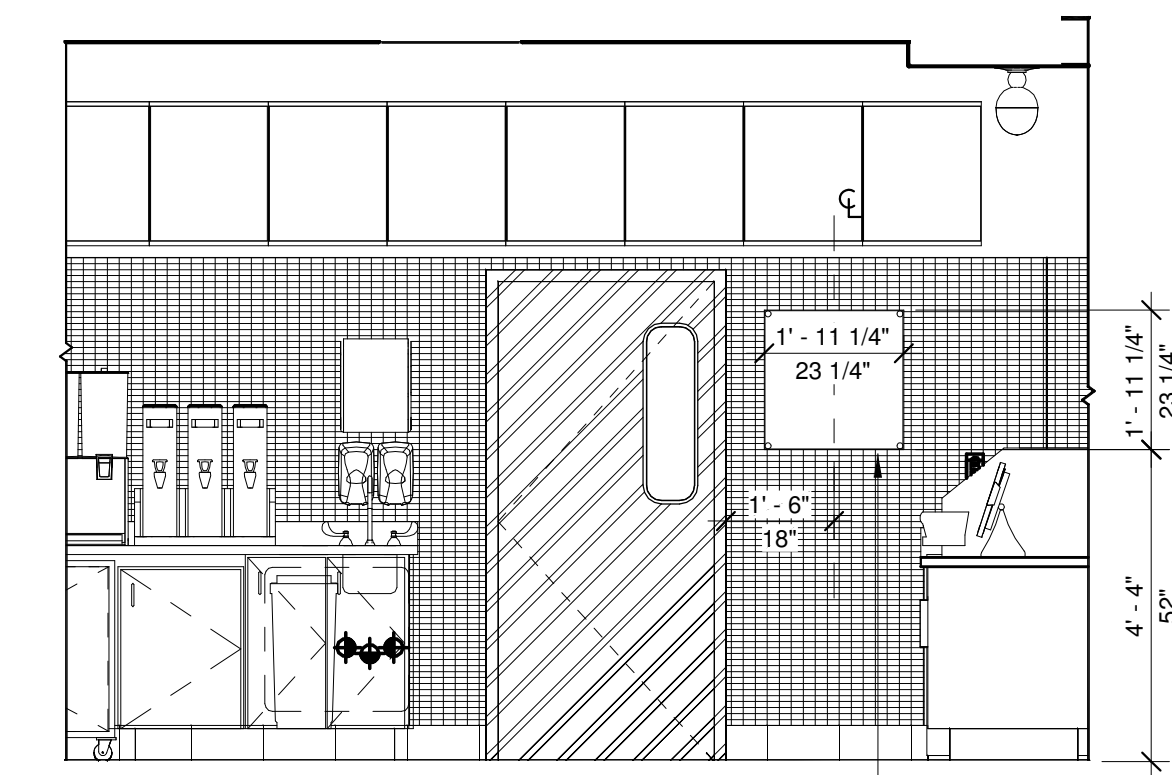
1 LRG. NATIONAL CAMPAIGN
3/8" = 1'-0"



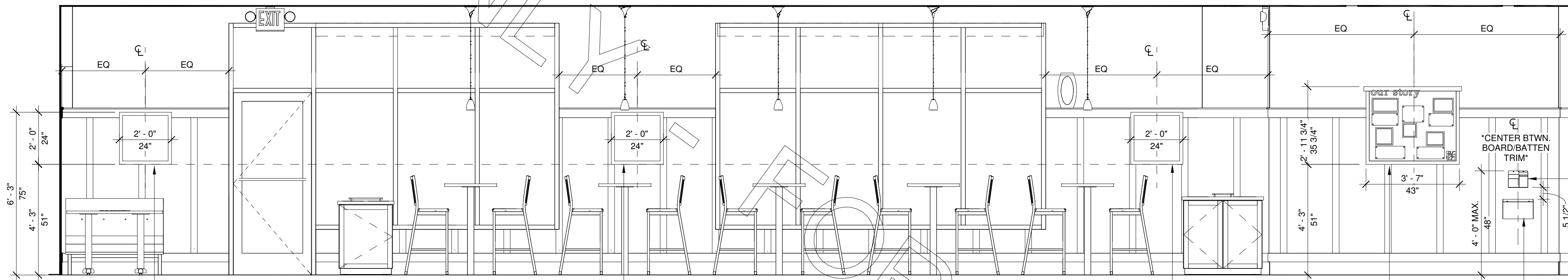
2 LRG. YOUR OPERATOR
3/8" = 1'-0"



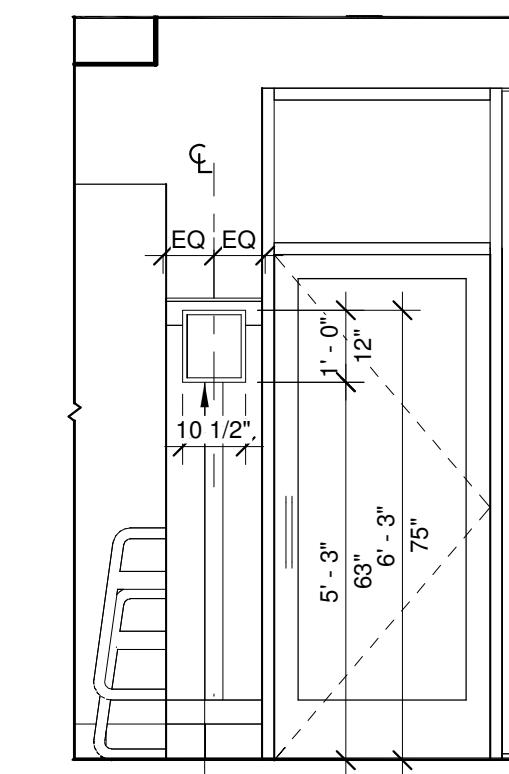
3 LRG. BRAND ICON + 2X2 PANEL
3/8" = 1'-0"



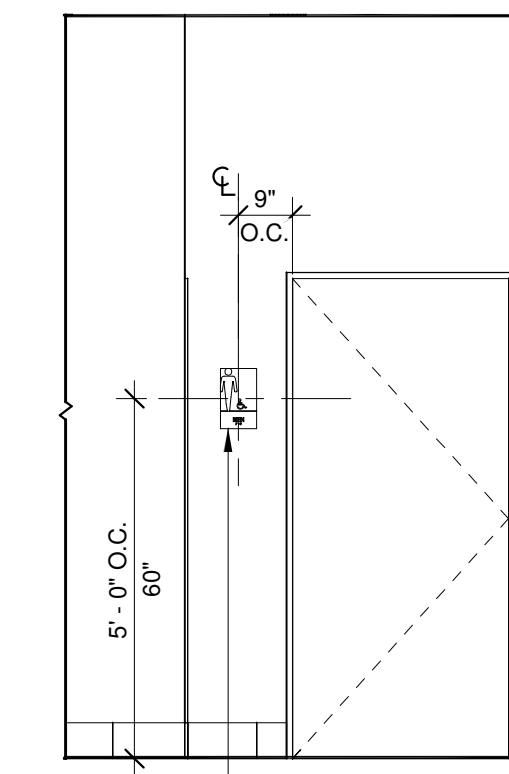
4 LRG. CERTIFICATE HOLDER
3/8" = 1'-0"



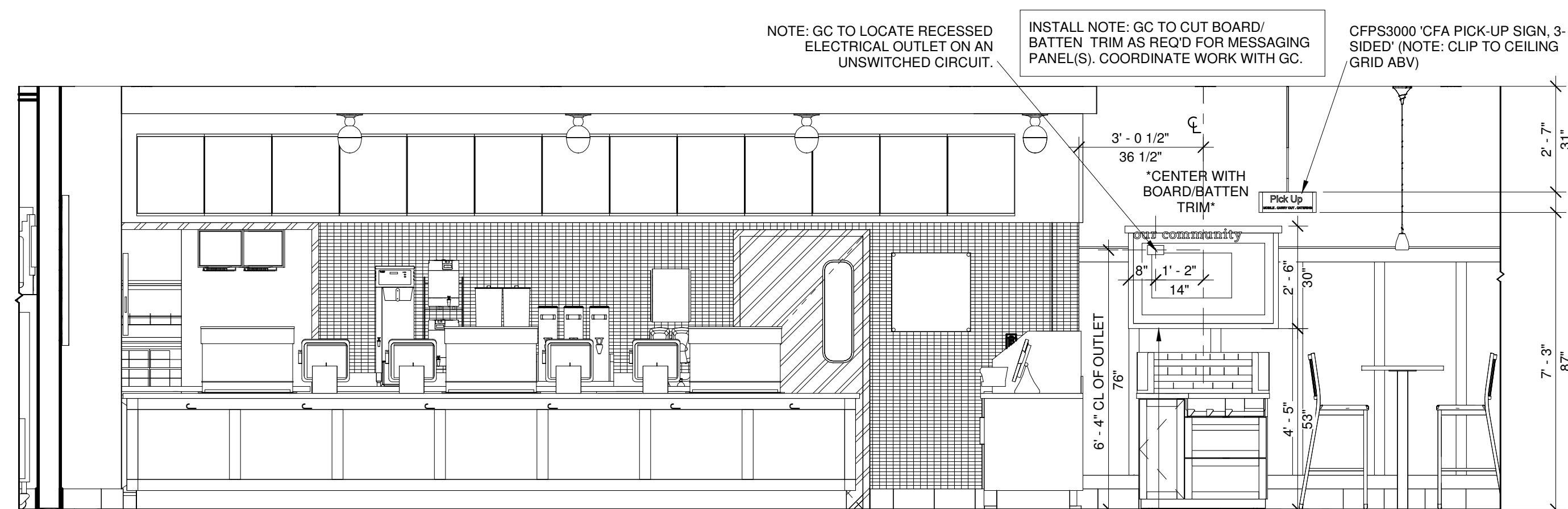
5 LRG. INTERIOR MESSAGING
3/8" = 1'-0"



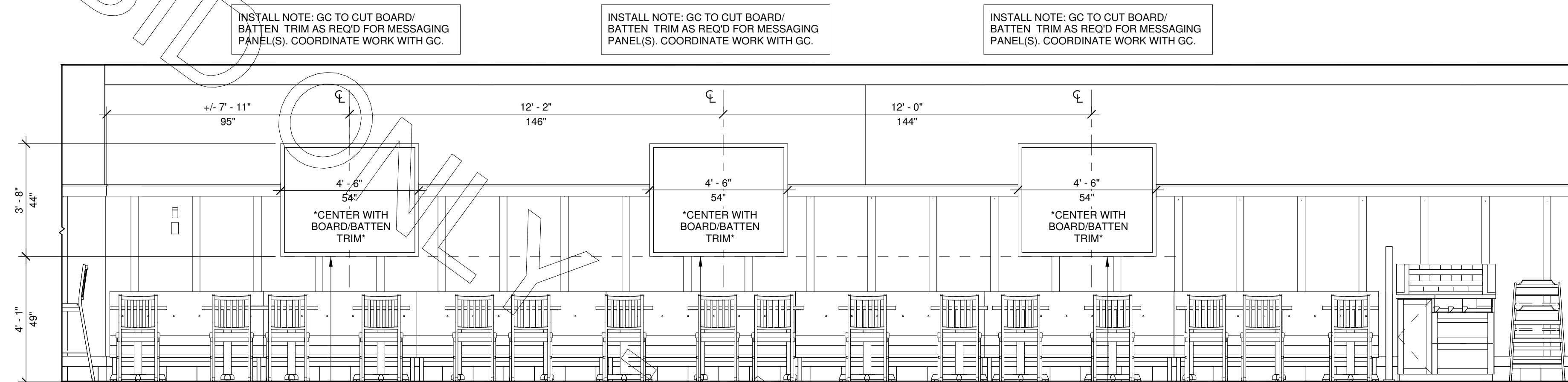
6 LRG. PLAY RULES
3/8" = 1'-0"



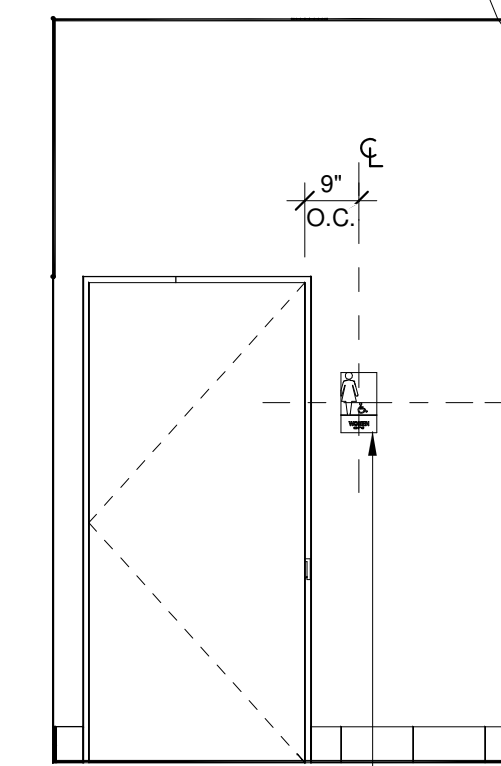
7 LRG. MENS RESTROOM SIGNAGE
3/8" = 1'-0"



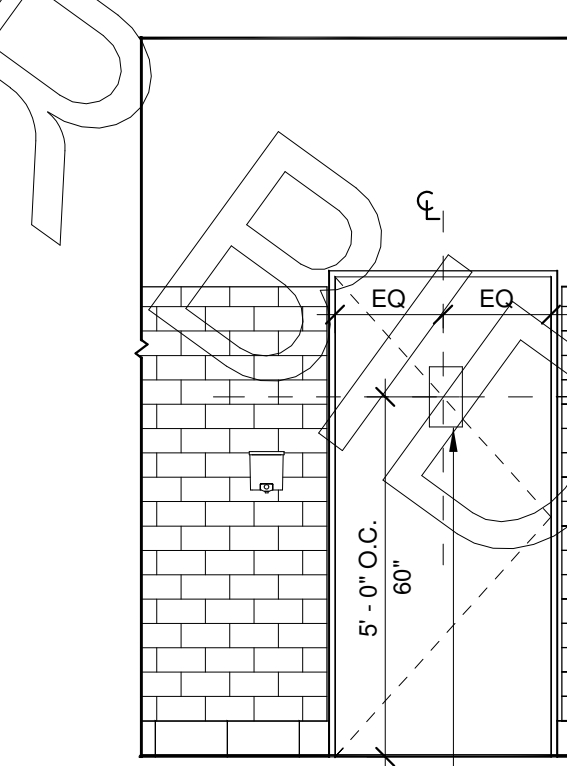
8 LRG. OUR COMMUNITY & PICK UP SIGN
3/8" = 1'-0"



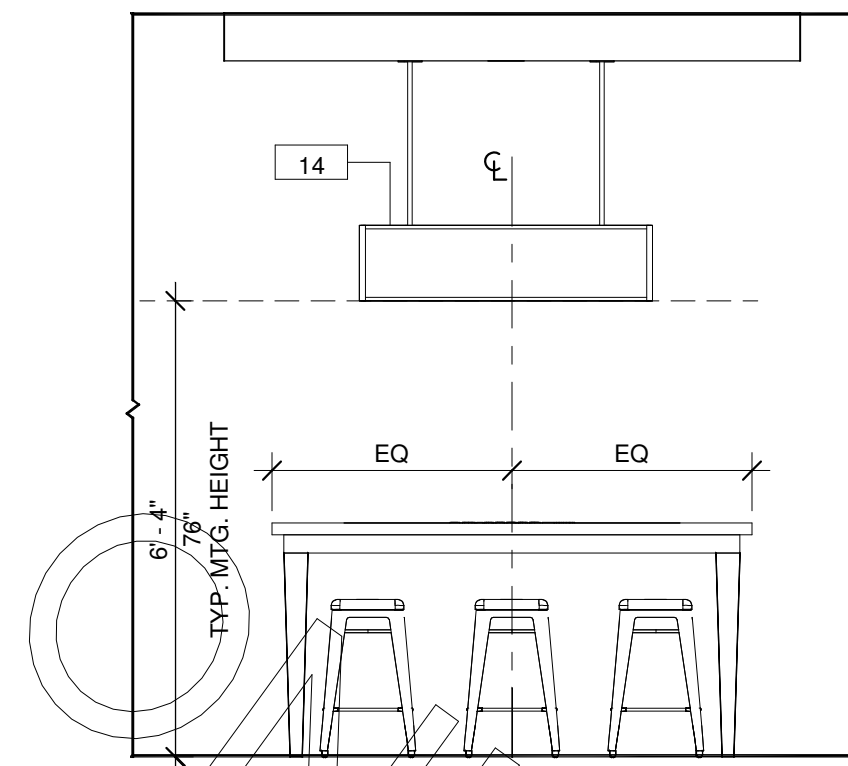
9 LRG. COWS IN THE COMMUNITY PANELS
3/8" = 1'-0"



10 LRG. WOMENS RESTRM SIGNAGE
3/8" = 1'-0"



11 LRG. HANDWASH SIGN
3/8" = 1'-0"



12 LRG. COKE FIXTURE
3/8" = 1'-0"

INTERIOR MESSAGING PANELS TO GET MOUNTED DIRECTLY OVER BOARD/ BATTEN WALL FINISH AS SHOWN UNLESS NOTED OTHERWISE TO CUT UPPER HORIZONTAL TRIM & VERTICAL BOARD/ BATTEN TRIM.

REFER TO ELEVATIONS FOR INTERIOR MESSAGING, FURNITURE, AND/OR DECOR LOCATIONS ONLY. REFER TO ARCHITECTURAL SHEETS FOR ALL INTERIOR FINISH & WALL PARTITION TYPE INFORMATION.



Chick-fil-A

Chick-fil-A
5200 Buffington Road
Atlanta, Georgia 30349-2998

CHi

Charter House Holdings, LLC
200 N. Franklin Street
Zeeland, MI 49464
www.gotoCHI.com
616.399.6000

This drawing contains proprietary information by CHI. Unauthorized use or reproduction is prohibited without expressed written consent of CHI.



CHICK-FIL-A
Cherokee Place FSR
115 Cherokee Place, Cartersville, GA 30121

FSR# 00534

REVISION SCHEDULE		
NO.	DATE	DESCRIPTION
1	12/21/17	ISSUED FOR PERMIT
2	03/08/18	ISSUED FOR BID

CURRENT DESIGN	NOTE APPLIED
ARCHITECT'S PROJECT #	
PRINTED FOR	BID SET
DATE	03/08/18
DRAWN BY	JS / LB

Information contained on this drawing and in all digital files produced for above named project may not be reproduced in any manner without express written or verbal consent from authorized project representatives.

SHEET
DECOR ELEVATIONS

SHEET NUMBER
F-701