

CORNER RECORD

Agency Index

BK 137 PG 78

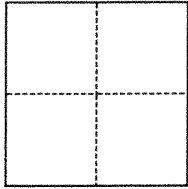
Document Number

CR 4562

City of Unincorporated County of Alameda, CaliforniaBrief Legal Description Southwesterly line of Lot 4, per 41 Maps 88 (APN: 85-1601-019)

CORNER TYPE

COORDINATES (Optional)



- ☐ Government Corner ☐ Control
☐ Meander ☒ Property
☐ Rancho ☐ Other

Date of Survey August 9, 2020

N. _____ E. _____

Elevation _____

Units ☐ Metric ☐ U.S. Survey Foot

Horizontal Datum _____

Zone _____ Epoch Date _____

Vertical Datum _____

☐ Complies with Public Resources Code §§8801-8819☐ Complies with Public Resources Code §§8890-8902

PLS Act Ref.:

☒ 8765(d)☐ 8771☐ 8773☐ Other:Corner/
Monument:☐ Left as found☒ Established☐ Rebuilt☐ Pre-Construction☐ Found and tagged☐ Reestablished☐ Referenced☐ Post-Construction

Narrative of corner identified and monument as found, set, reset, replaced, or removed:

☒ See sheet #2 for description(s):**FOUND: Standard County Pin monument in monument well per (41 Maps 88).****SET: 1/2" rebar & plastic cap "PLS 7393", or nail & 3/4" brass tag "PLS 7393".**

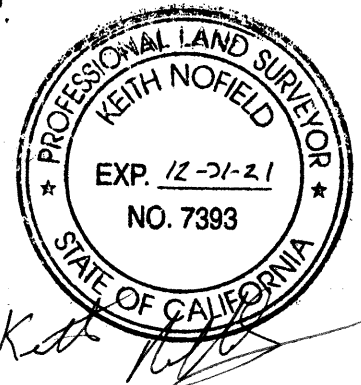
SURVEYOR'S STATEMENT

This Corner Record was prepared by me or under my direction in conformance with

the Professional Land Surveyors' Act on August 11, 2020

Signed

P.L.S. or R.C.E. No.

PLS 7393

COUNTY SURVEYOR'S STATEMENT

This Corner Record was received

and examined and filed

MAR 17 2021

Signed

P.L.S. or R.C.E. No.

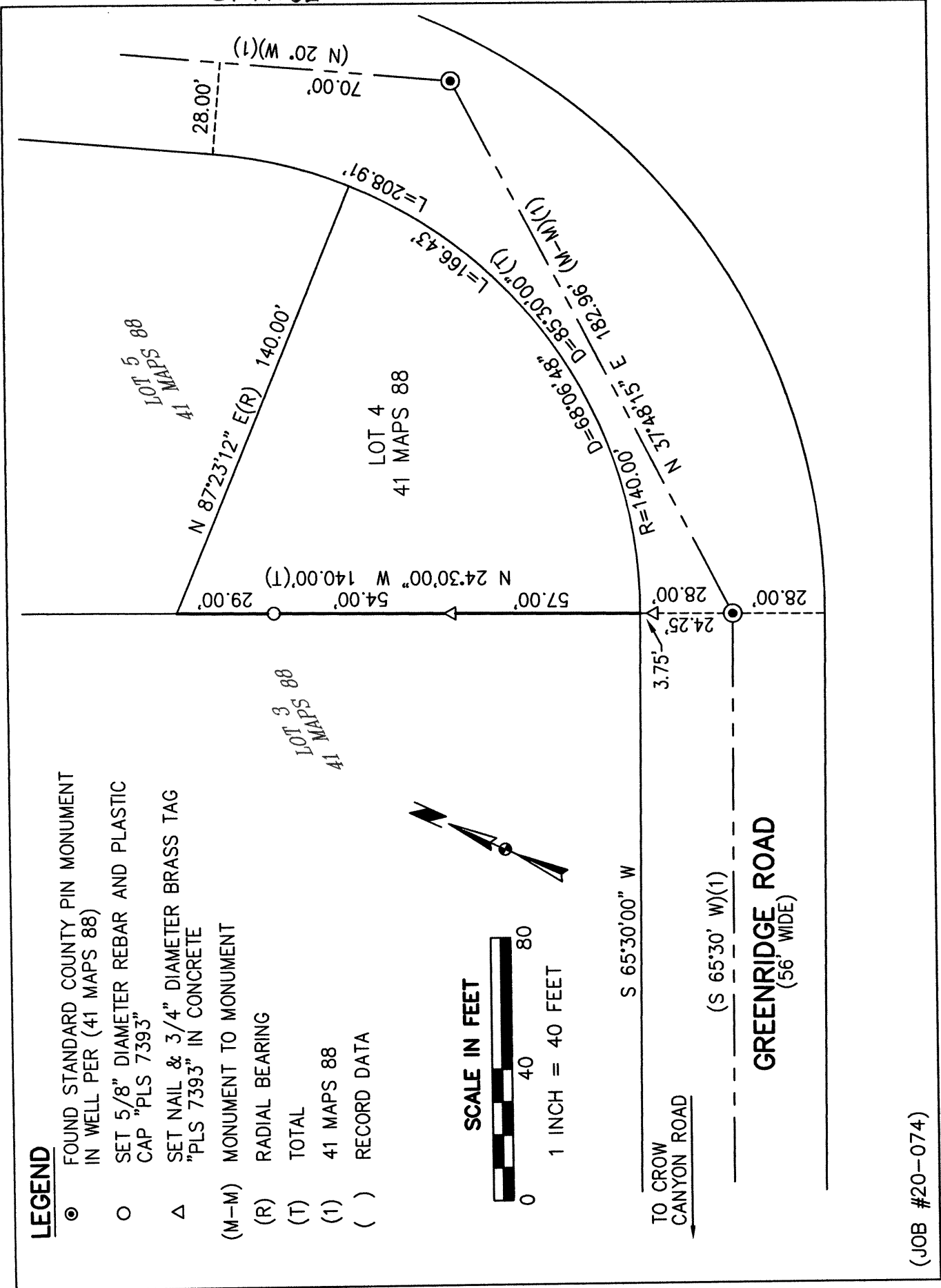
7010

Title

ALAMEDA COUNTY SURVEYOR

County Surveyor's Comment





(JOB #20-074)