

SURVEYOR'S CERTIFICATE

This map correctly represents a survey made by me in conformance with the requirements of Chapter 15 of Division 3 of the Business and Professions Code at the request of Messrs Bob Shatz, C.E. Cowert, M. Seelmeier, W.H. Smith and Joe Deeble in October, 1961. Bearings are based on the recovered north line of Lots 2 to 4 of Block 7, Mammoth Camp Tract 2.

C.H. Jackson
R.C.E. No. 10121

COUNTY SURVEYOR'S CERTIFICATE

This map has been examined for conformance with the requirements of Chapter 15 of Division 3 of the Business and Professions Code this _____ day of _____, 19____.

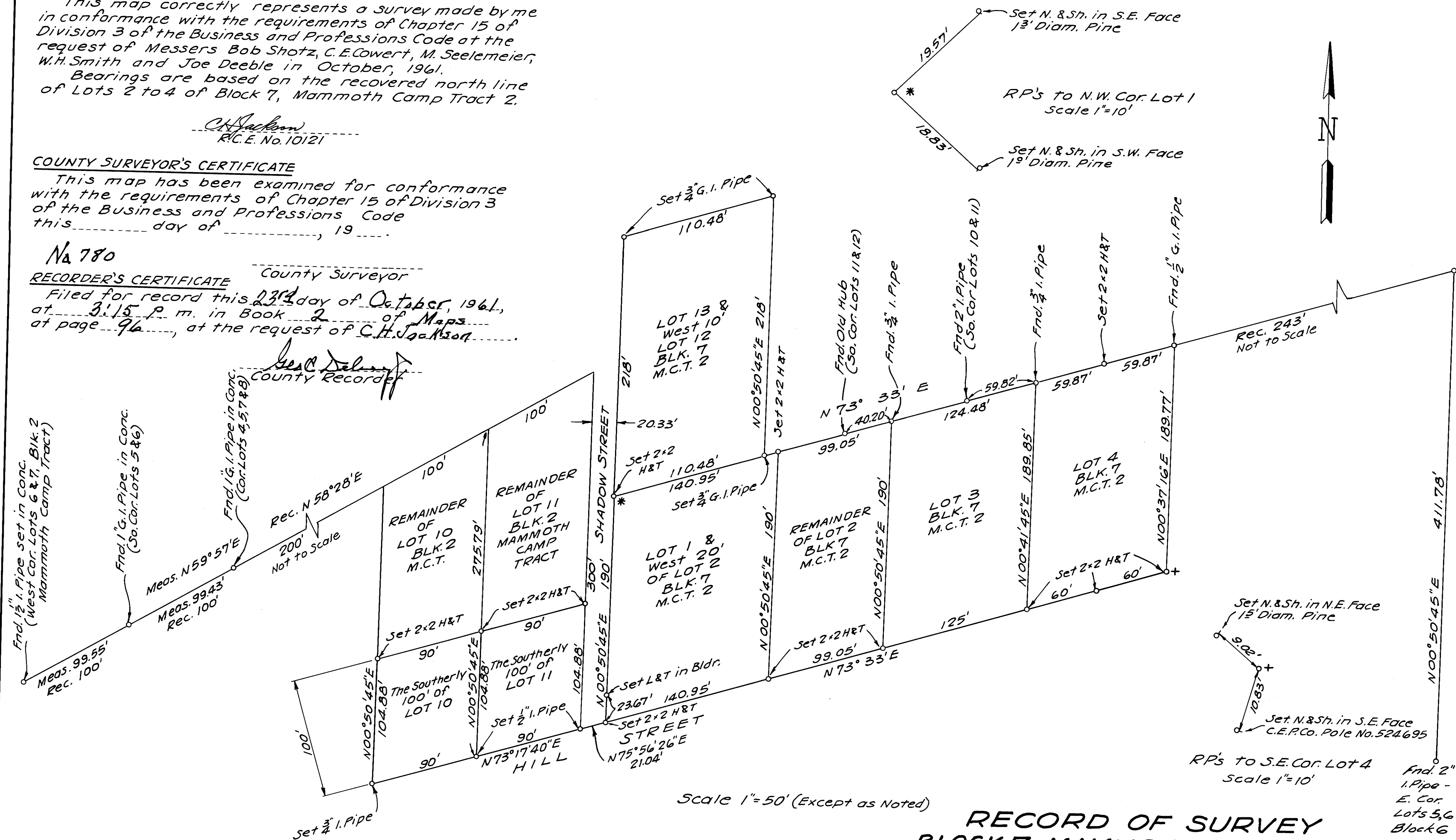
Na 780

RECORDER'S CERTIFICATE

Filed for record this 23rd day of October, 1961, at 3:15 p.m. in Book 2 of Maps at page 96, at the request of C.H. Jackson.

County Surveyor

County Recorder



Scale 1"=50' (Except as Noted)

**RECORD OF SURVEY
BLOCK 7, MAMMOTH CAMP TRACT 2
AND
BLOCK 2, MAMMOTH CAMP TRACT
SEC. 3, T.4 S., R.27 E., M.D.B. & M.
COUNTY OF MONO
STATE OF CALIFORNIA**

Find 2" I. Pipe - E. Cor. Lots 3, 6 Block 6