



PANDA RESTAURANT GROUP INC.  
1683 Walnut Grove Ave.  
Rosemead, California  
91770  
Telephone: 626.799.9898  
Facsimile: 626.372.8288

All ideas, designs, arrangement and plans indicated or represented by this drawing are the property of Panda Express Inc. and were created for use on this specific project. None of these ideas, designs, arrangements or plans may be used by or disclosed to any person, firm, or corporation without the written permission of Panda Express Inc.

REVISIONS:		
ISSUE DATE:		
1	CHECK SET	10-23-20
2	PERMIT SET	03-15-21
3	BID SET	04-02-21

DRAWN BY: JO

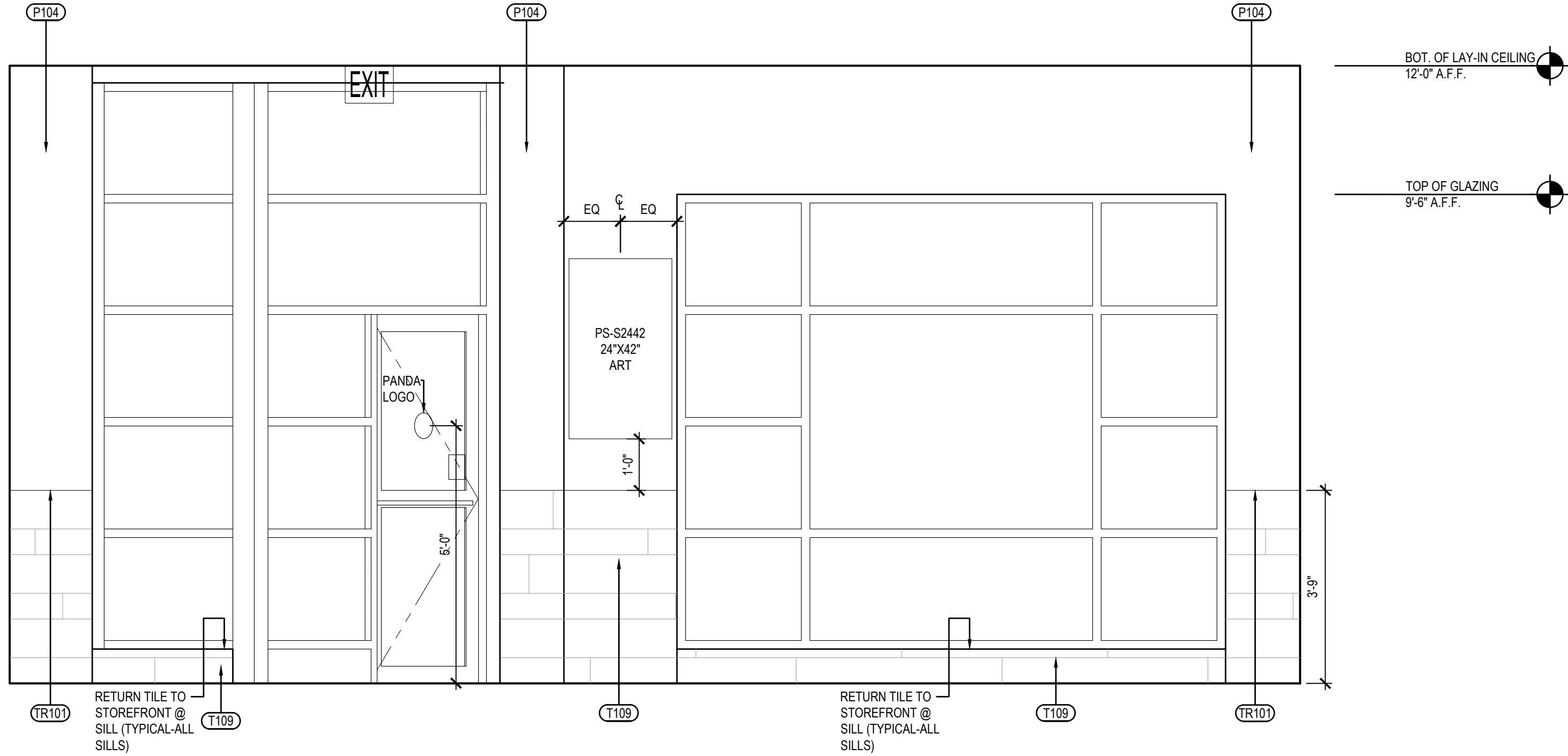
PANDA PROJECT #: S4-21-D7864  
ARCH PROJECT #: P7350

www.cphcorp.com  
**A Full Service  
A & E Firm**

Plans Prepared By:  
**CPI Design, Inc.**  
500 West Fulton St.  
Sanford, FL 32771  
Ph: 407.322.6841  
State of Virginia Licenses:  
Engineer No. 407006317  
Surveyor No. N/A  
Architect No. 407006317  
Landscape No. 407006317

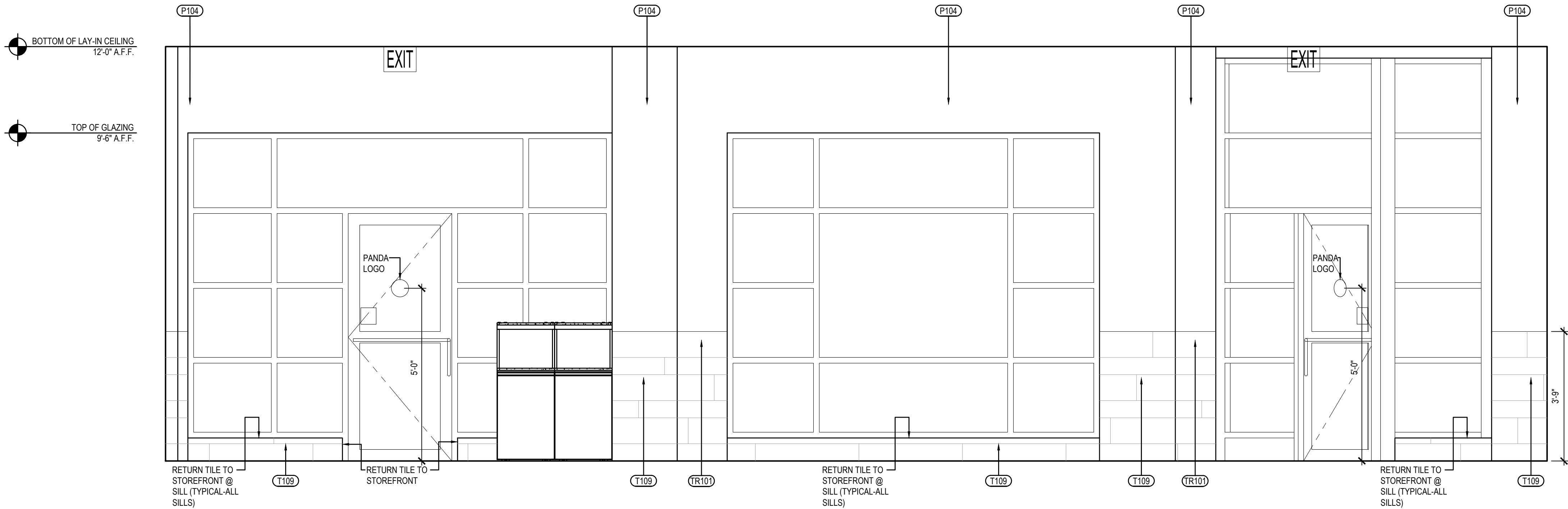
PANDA EXPRESS  
END CAP - TENANT BUILD OUT  
4501 S LABURNUM AVE  
RICHMOND VA, 23231

A-501  
INTERIOR ELEVATIONS



DINING ROOM ELEVATION 2

Scale= 1/2" = 1'-0" A-501



DINING ROOM ELEVATION 1

Scale= 1/2" = 1'-0" A-501