

RECORD OF SURVEY NO. 32-115

BEING A SURVEY OF LOTS 6 & 7, BLOCK A, TWIN LAKES SUBDIVISION SOUTH PORTION,
FILED IN BOOK 1 OF MAPS, PAGE 47, AND BEING LOCATED IN A PORTION OF
LOT 2 OF SECTION 5, TOWNSHIP 3 NORTH, RANGE 24 EAST, MOUNT DIABLO MERIDIAN
COUNTY OF MONO, STATE OF CALIFORNIA

SURVEYOR'S STATEMENT

THIS MAP CORRECTLY REPRESENTS A SURVEY
MADE BY ME OR UNDER MY DIRECTION IN
CONFORMANCE WITH THE REQUIREMENTS OF
THE PROFESSIONAL LAND SURVEYOR'S ACT AT THE
REQUEST OF JACK & RICHARD LONG IN OCTOBER, 2023.

JOHN R. LANGFORD
P.L.S. 5149
EXPIRATION DATE: 6/30/25



EXPIRATION DATE: 6/30/2025
11/13/2023

PURPOSE OF SURVEY:

THE REASON FOR THIS RECORD OF SURVEY MAP IS AS SET
FORTH IN SECTION 8762 (B)(1) OF THE PROFESSIONAL LAND
SURVEYOR'S ACT; MATERIAL EVIDENCE OR PHYSICAL CHANGE,
WHICH IN WHOLE OR IN PART DOES NOT APPEAR ON ANY
SUBDIVISION MAP, OFFICIAL MAP, OR RECORD OF SURVEY
PREVIOUSLY RECORDED OR PROPERTY FILED IN THE OFFICE OF
THE COUNTY RECORDER.

RECORDER'S STATEMENT

FILED THIS 5 DAY OF December, 2023,
AT 8:24 P.M. IN BOOK 6 OF RECORD OF SURVEYS
AT PAGE 11, AT THE REQUEST OF JACK &
RICHARD LONG.

MONO COUNTY RECORDER

BY: Queenie Barnard, Assistant Clerk Recorder
MONO COUNTY RECORDER

DOCUMENT NO: 2023 003149
FEE: \$ 85.00

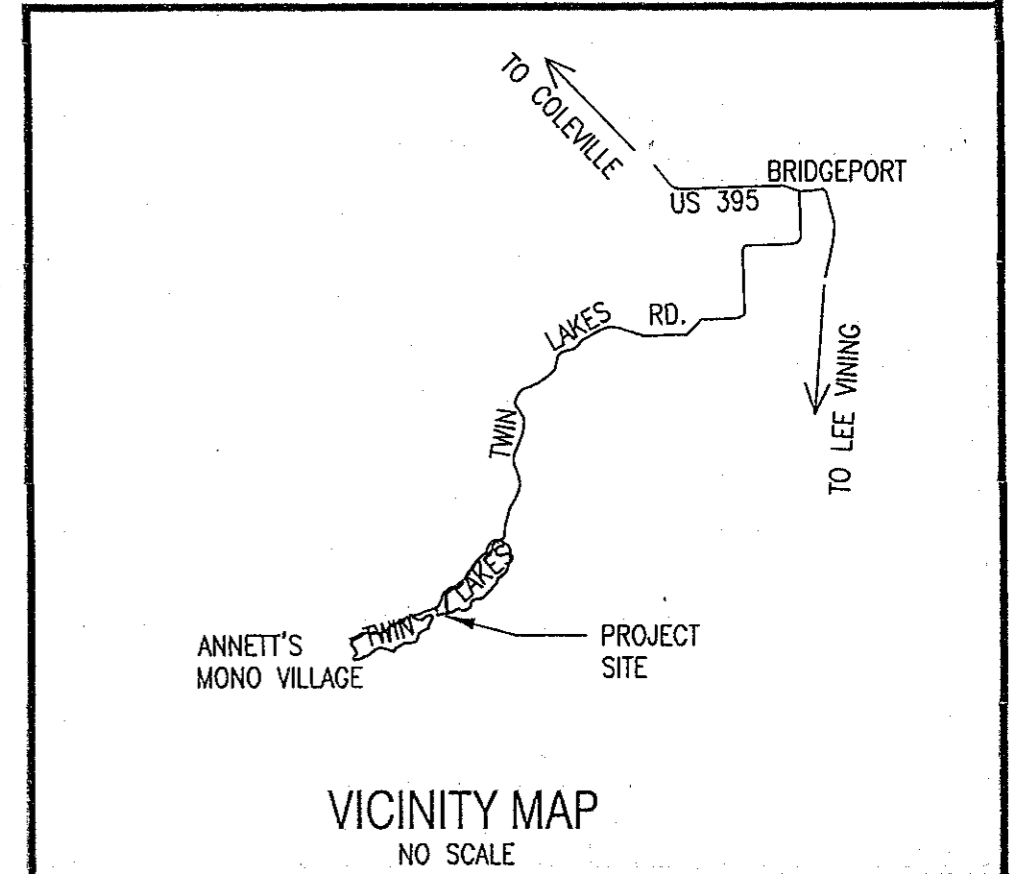
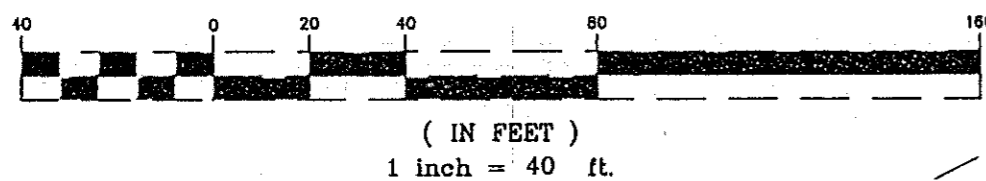
COUNTY SURVEYOR'S STATEMENT

THIS MAP HAS BEEN EXAMINED IN ACCORDANCE
WITH SECTION 8766 OF THE PROFESSIONAL LAND SURVEYOR'S
ACT THIS 20th DAY OF November, 2023

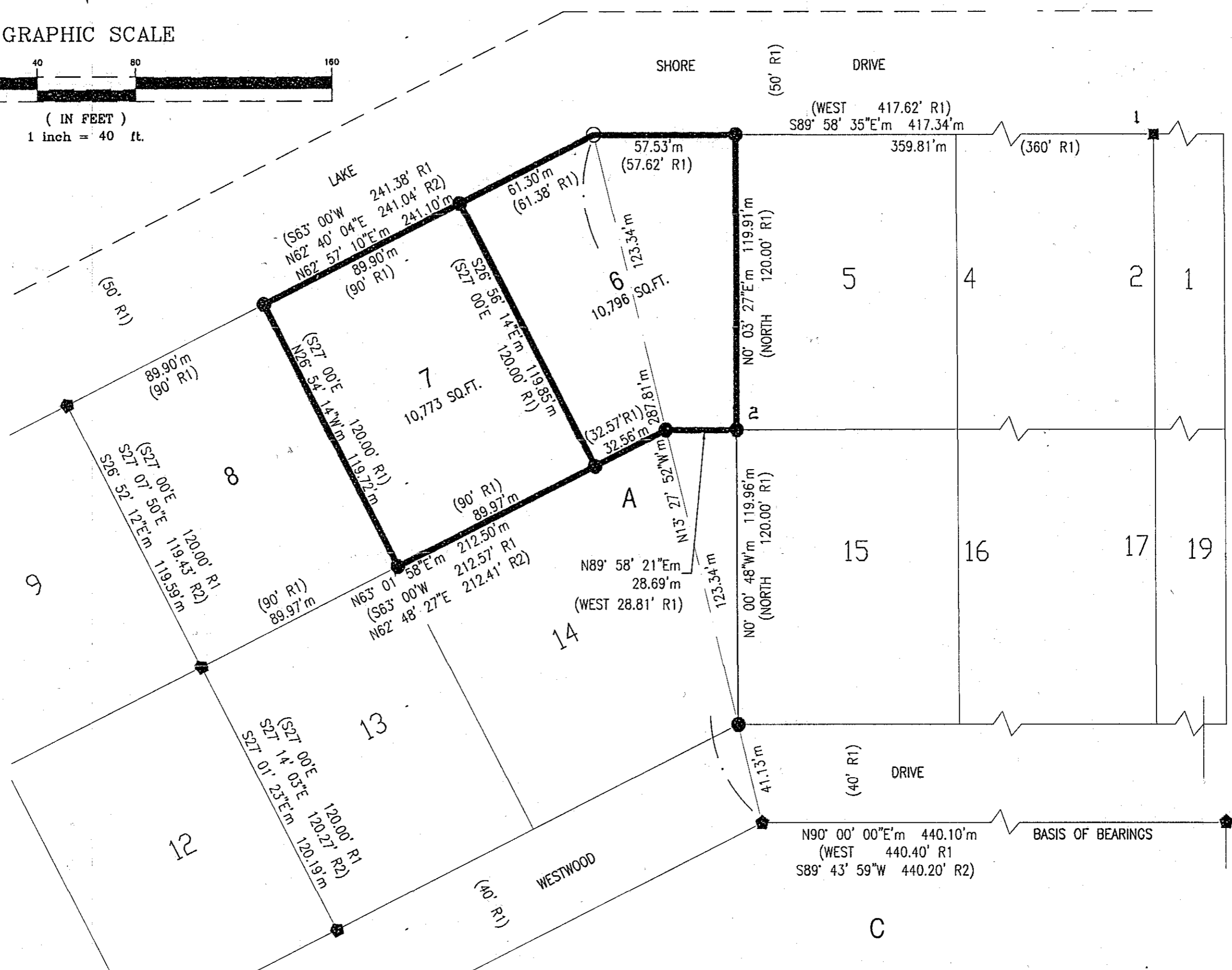
RICHARD B. BYREM P.L.S. 9129
MONO COUNTY SURVEYOR



GRAPHIC SCALE



VICINITY MAP
NO SCALE



HISTORY OF SURVEYS

- R1: TWIN LAKES SUBDIVISION SOUTH PORTION FILED ON APRIL 18, 1955 IN BOOK 1 OF MAPS, PAGE 47.
R2: RECORD OF SURVEY NO. 32-46 FILED ON MARCH 10, 1993 IN BOOK 2 OF RECORD OF SURVEYS,
PAGE 139.

CORNER DESCRIPTIONS

- 1 FOUND A 1" x 3' HIGH IRON PIPE IN A 1' ROCK MOUND. MONUMENT SUBSTANTIALLY
CONFORMS TO THE POSITION OF THE CORNER TO LOTS 1 & 2 PER R1. ACCEPTED AS A
CAREFUL AND FAITHFUL PERPETUATION OF THE LOT CORNER.
- 2 FOUND A 1' ROCK MOUND. MOUND SUBSTANTIALLY CONFORMS TO THE POSITION OF THE
CORNER TO LOTS 5 & 6 PER R1. ACCEPTED AS A CAREFUL AND FAITHFUL PERPETUATION OF
THE LOT CORNER. SET A 2" ALUMINUM CAP AS NOTED HEREON IN CENTER OF MOUND.

BASIS OF BEARINGS: WEST, THE
NORTHERLY LINE OF BLOCK C OF TWIN LAKES
SUBDIVISION, SOUTH PORTION.

LEGEND

- Found a 1-1/2" aluminum cap inscribed LS1549. Accepted as a
property corner per R2.
- Found a 3/8" orange rebar in a 6"x6" concrete monument. Accepted
as the angle point to Lot 6 per R1.
- Set a 2" aluminum cap inscribed LS1549 on a 5/8"x24" rebar.
See Corner Descriptions for numbered locations.
- m Based on field measurements.
- (R*) Based on record information per HISTORY OF SURVEYS
hereon.