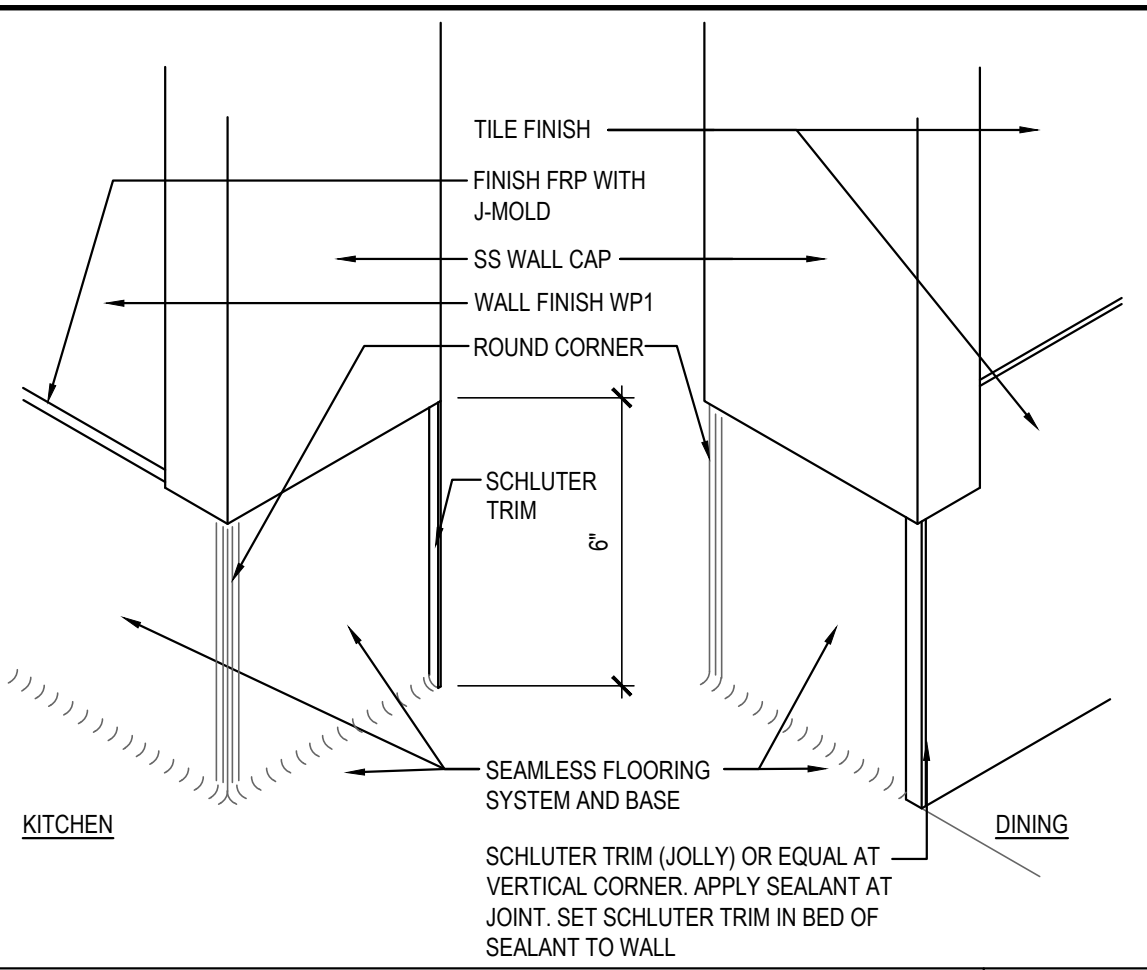


NOT USED

21

Scale= NTS

A-404

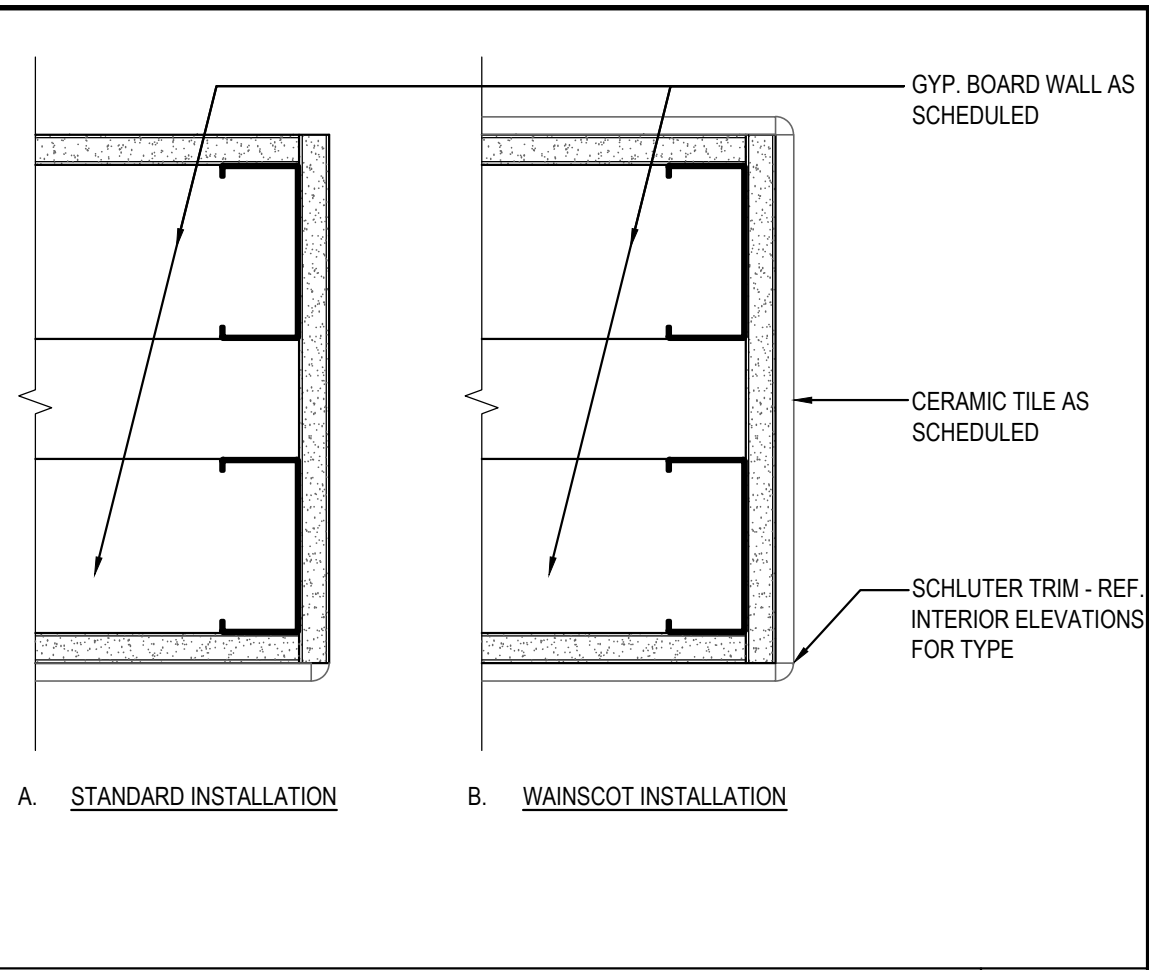


WALL BASE

14

Scale= 3" = 1'-0"

A-404

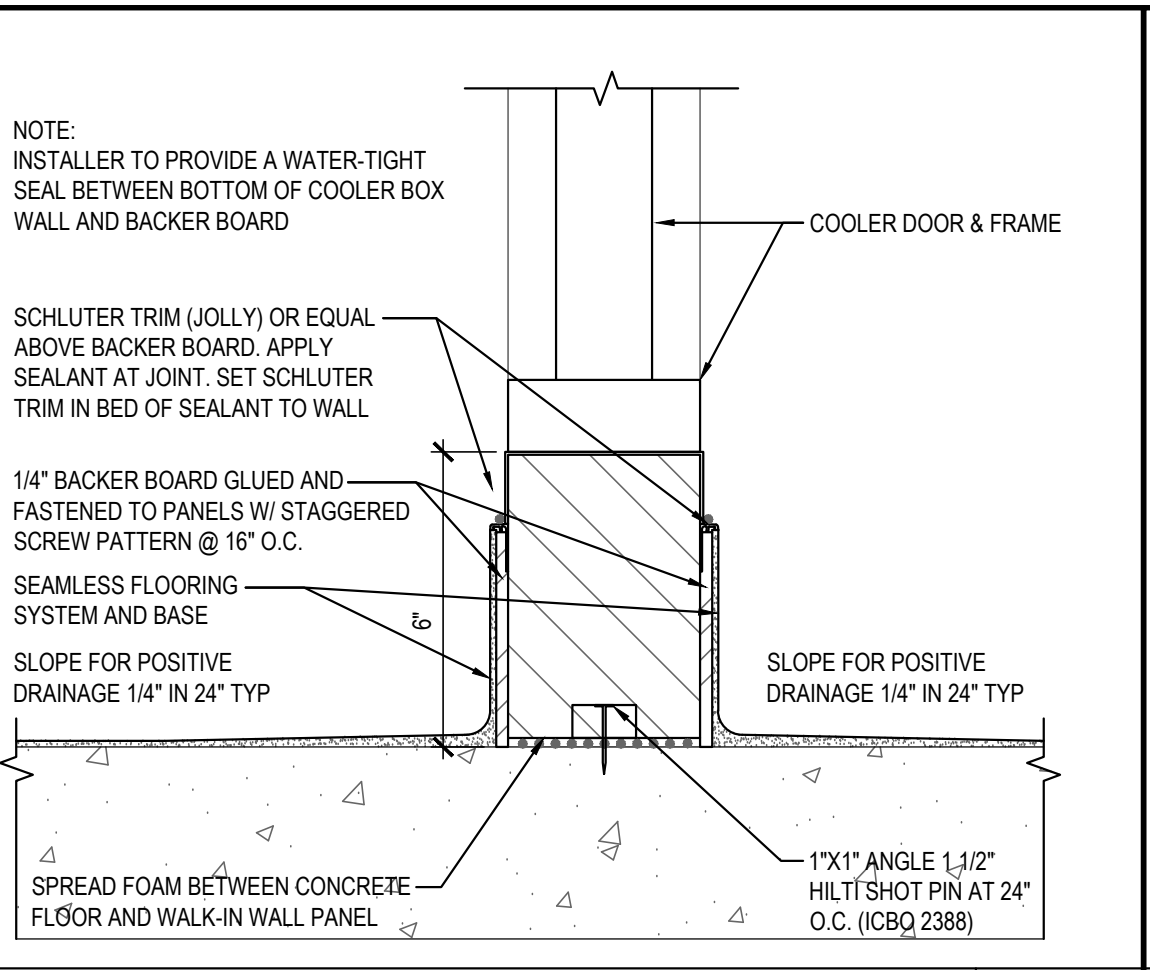


PLAN SECTION WALL DETAIL

11

Scale= 3" = 1'-0"

A-404

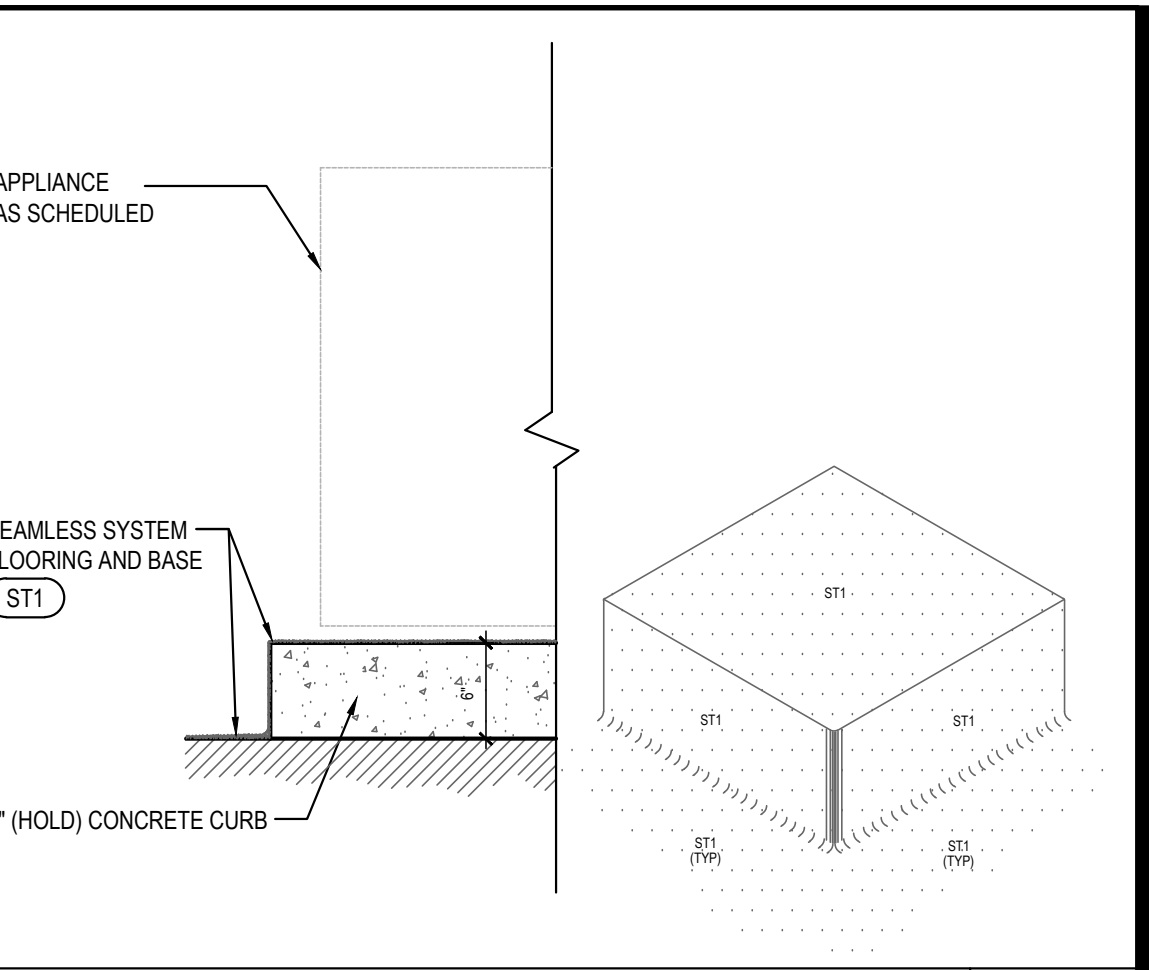


WALL BASE @ COOLER

7

Scale= 3" = 1'-0"

A-404



6" CURB DETAIL

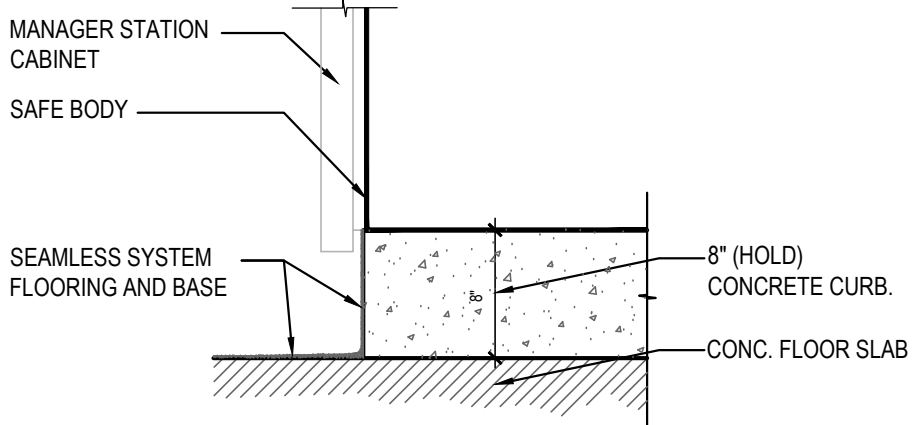
4

Scale= 1" = 1'-0"

A-404

MANAGER CABINET STATION CURB SIZES REFER FLR. PLAN FOR LOCATION

- 1) IF CABINET IS ENCLOSED BY 3 SIDE OF WALLS:
8" H X 24" W X 48-1/2" L (CONCRETE CURB ONLY, NOT INCLUDE SEAMLESS BASE)
SEAMLESS SYSTEM ON FRONT FACE (EXPOSED CURB). THIS APPLY TO PROTOTYPE BUILDING LAYOUTS.
- 2) IF CABINET ENCLOSED BY ONLY (1) ONE WALL:
8" H X 24" W X 46" L (CONCRETE CURB ONLY, NOT INCLUDE SEAMLESS BASE)
SEAMLESS SYSTEM ON FRONT AND (1) SIDE FACE (EXPOSED CURB)
- 3) IF CABINET OPEN WITH NO WALLS:
8" H X 24" W X 46" L (CONCRETE CURB ONLY, NOT INCLUDE SEAMLESS BASE)
SEAMLESS SYSTEM ON ALL 3 SIDES OF THE CURB

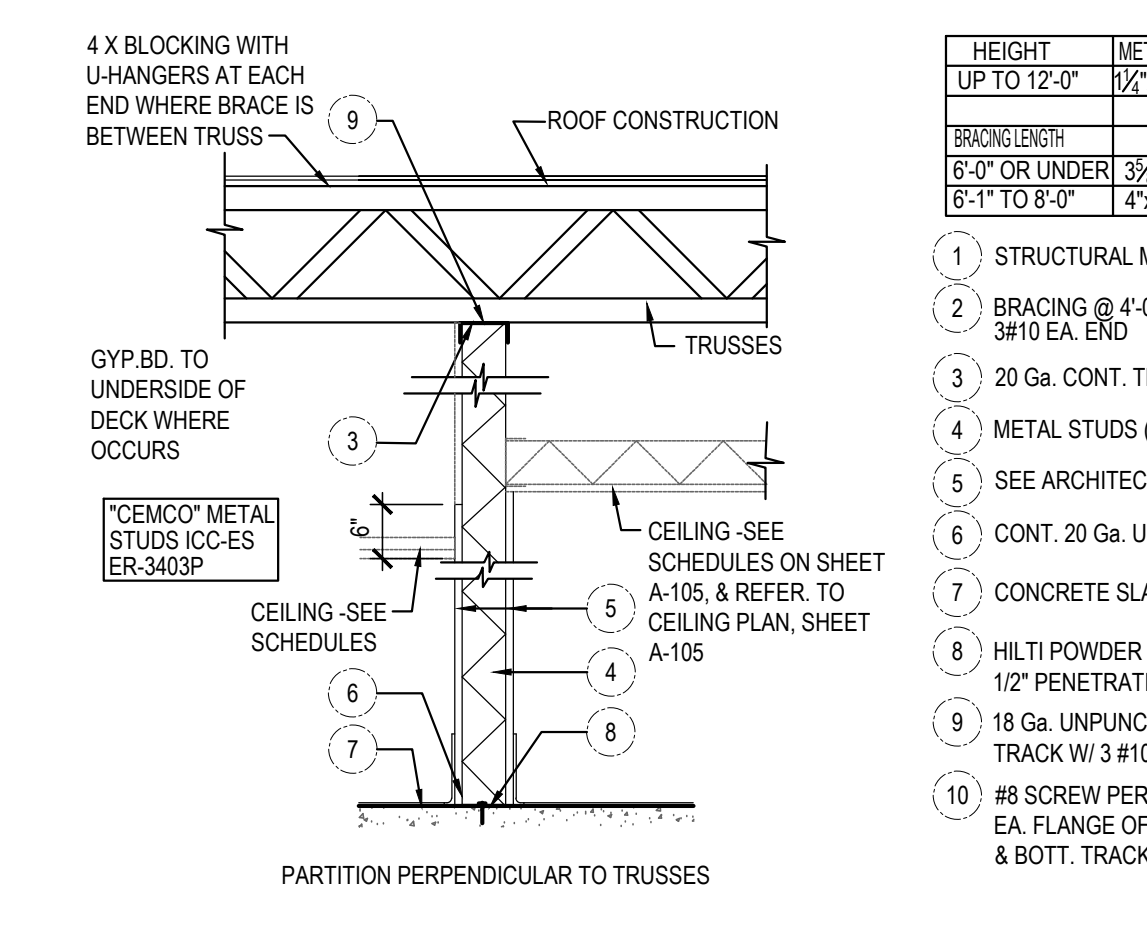


MGR. STATION & SAFE CURB

20

Scale= 1" = 1'-0"

A-404

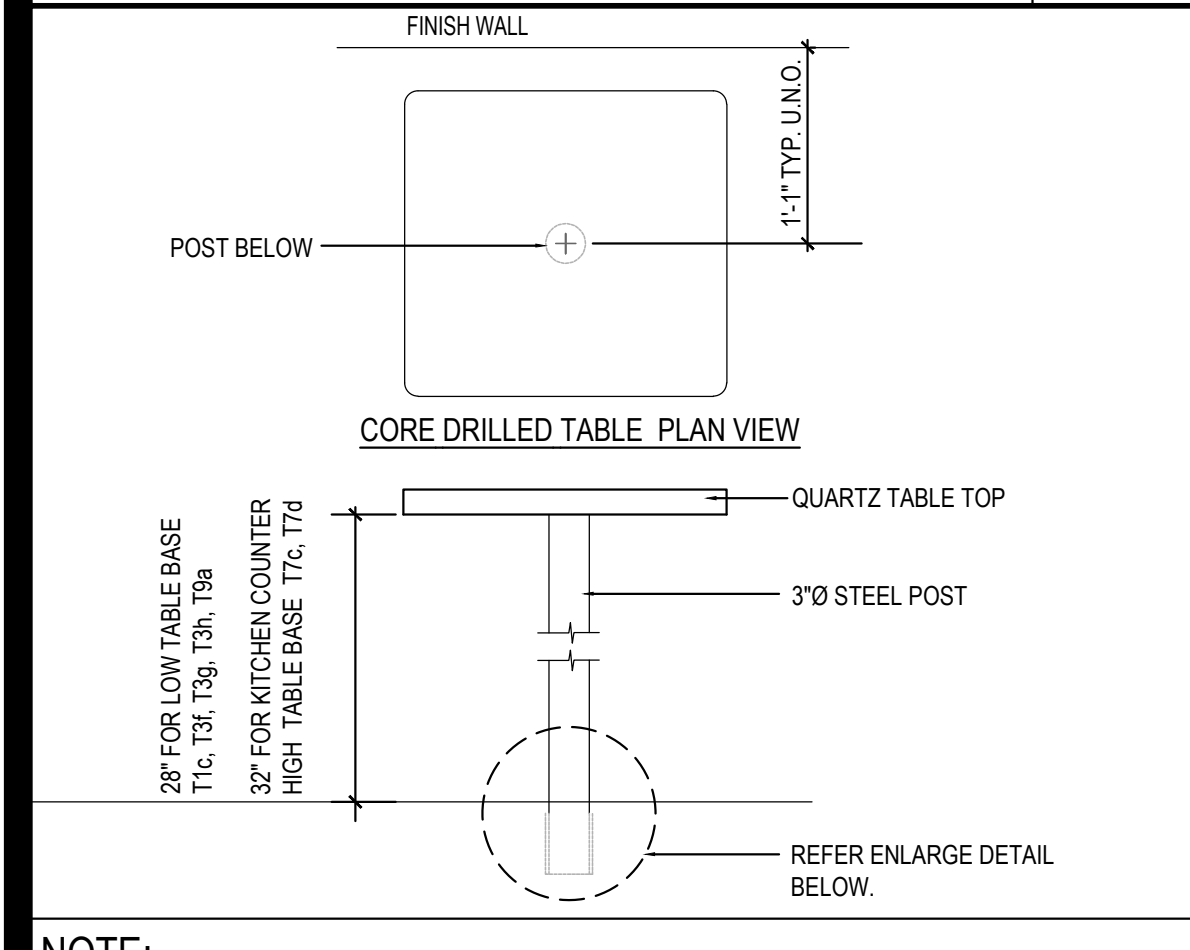


PARTITION DETAILS

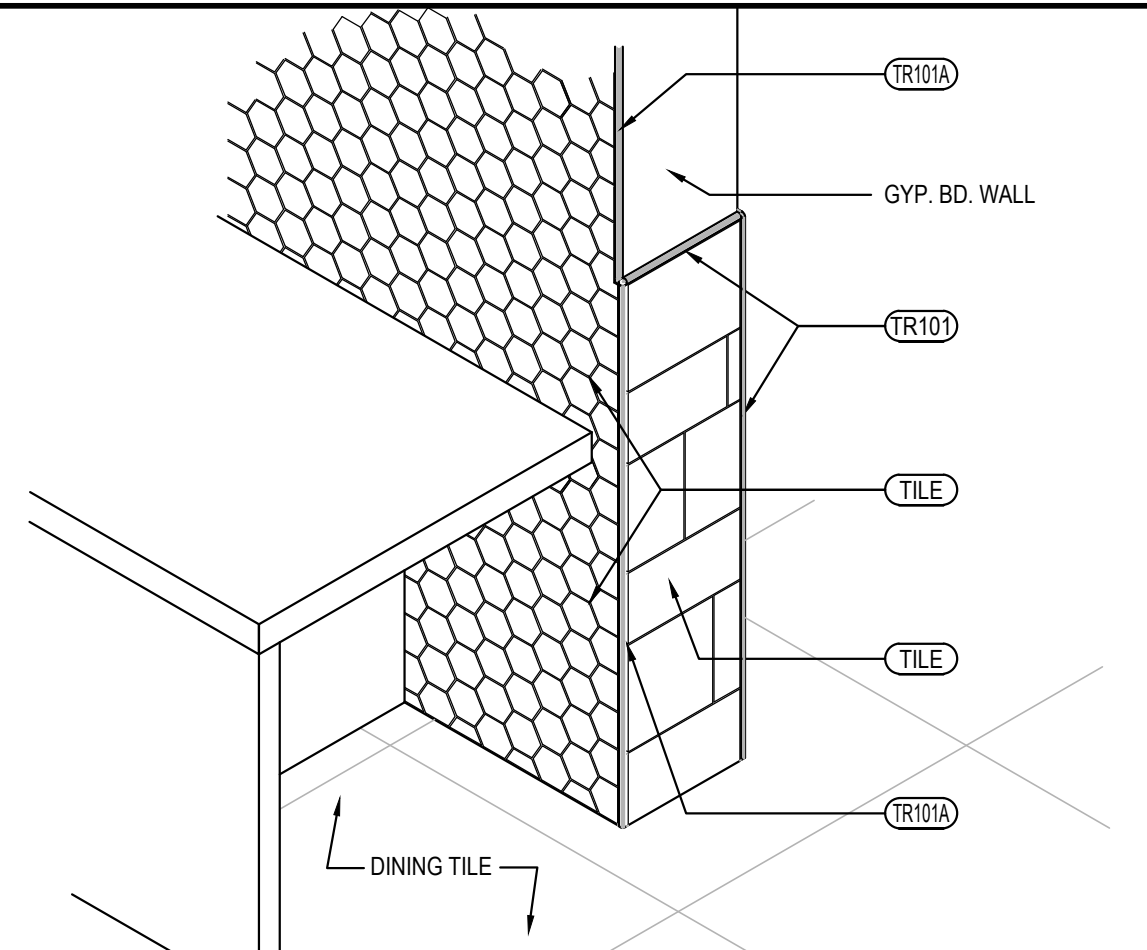
10

Scale= 3/4" = 1'-0"

A-404



NOTE:
G.C. TO REFER CORE DRILL LOCATION ON SHEET A-109

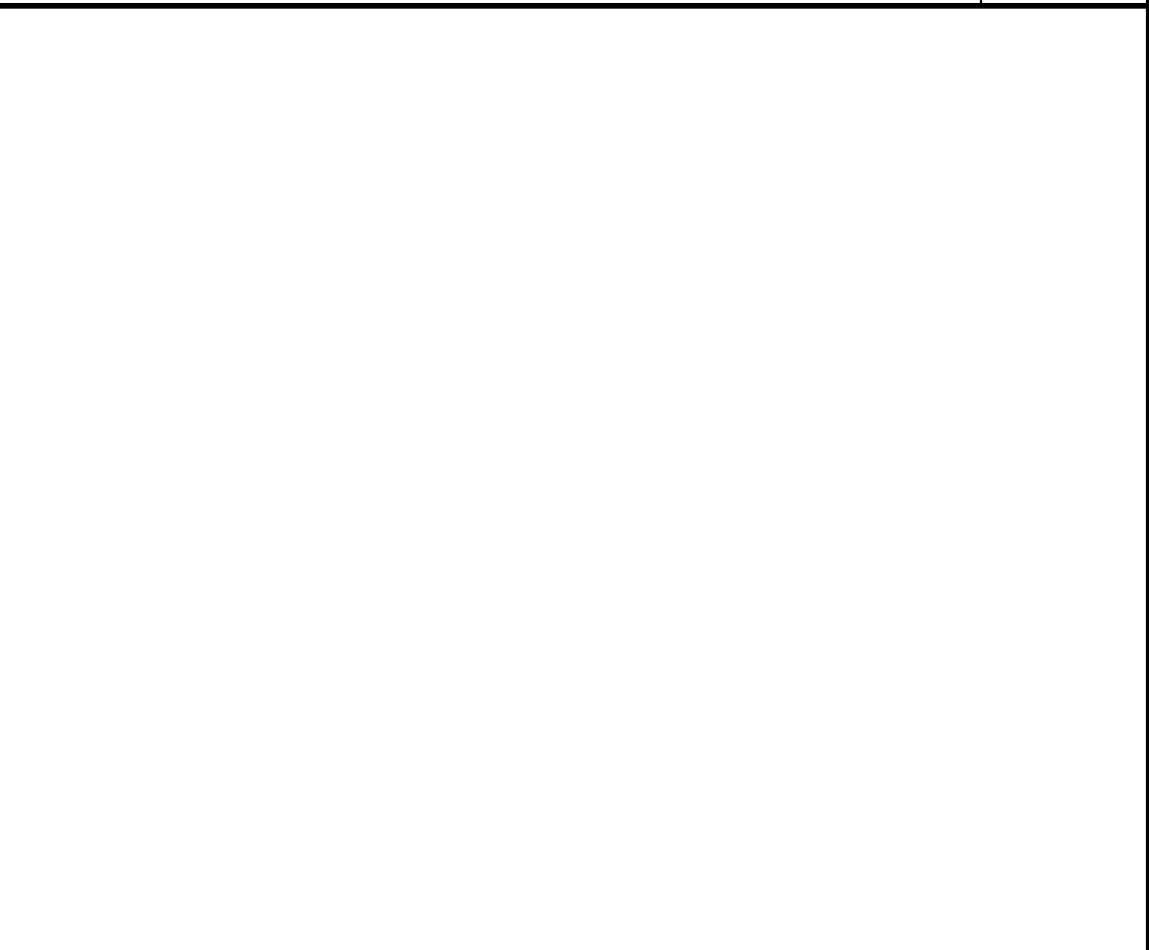


OUTSIDE CORNER ISOMETRIC

13

Scale= 3/4" = 1'-0"

A-404

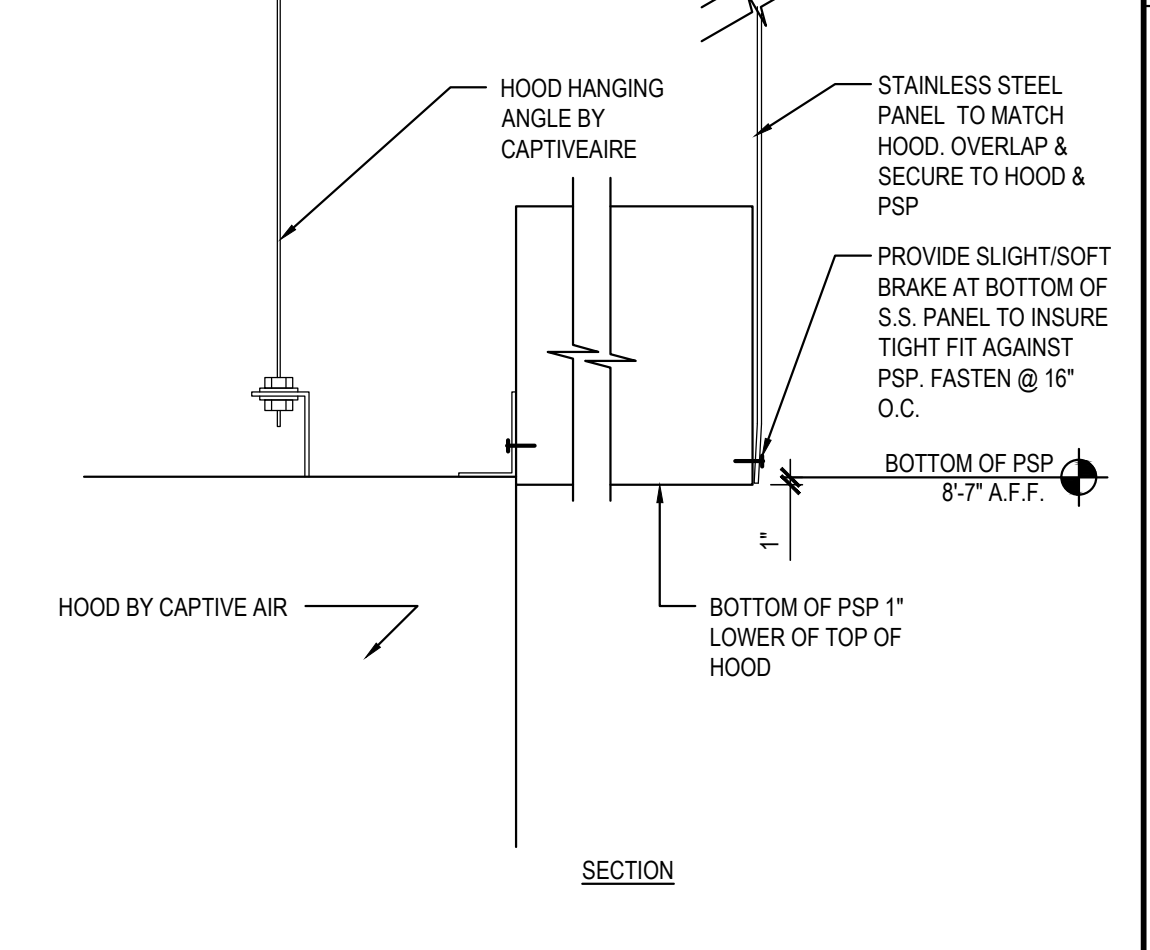


NOT USED

9

Scale= 1" = 1'-0"

A-404

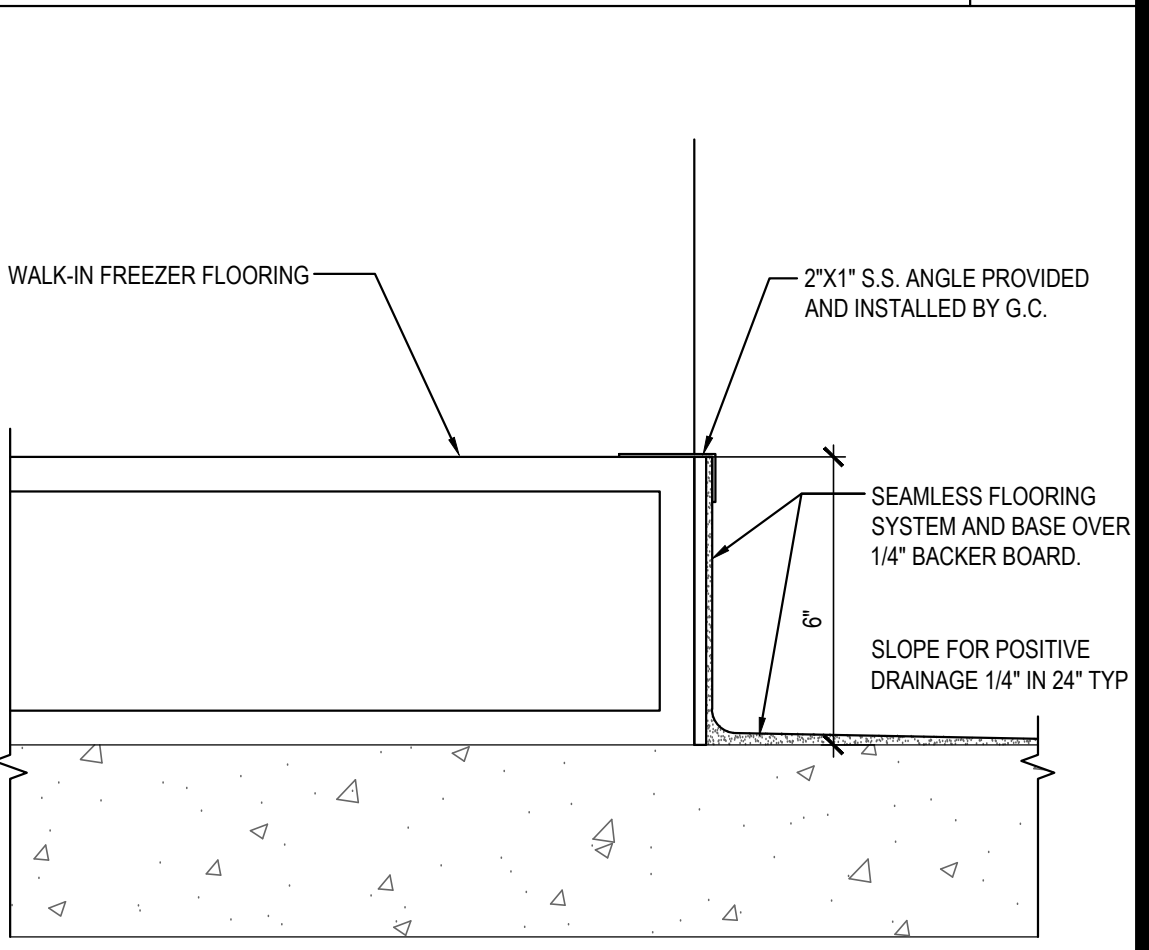


S.S. DETAIL @ EXHAUST HOOD

6

Scale= 1/2" = 1'-0"

A-404

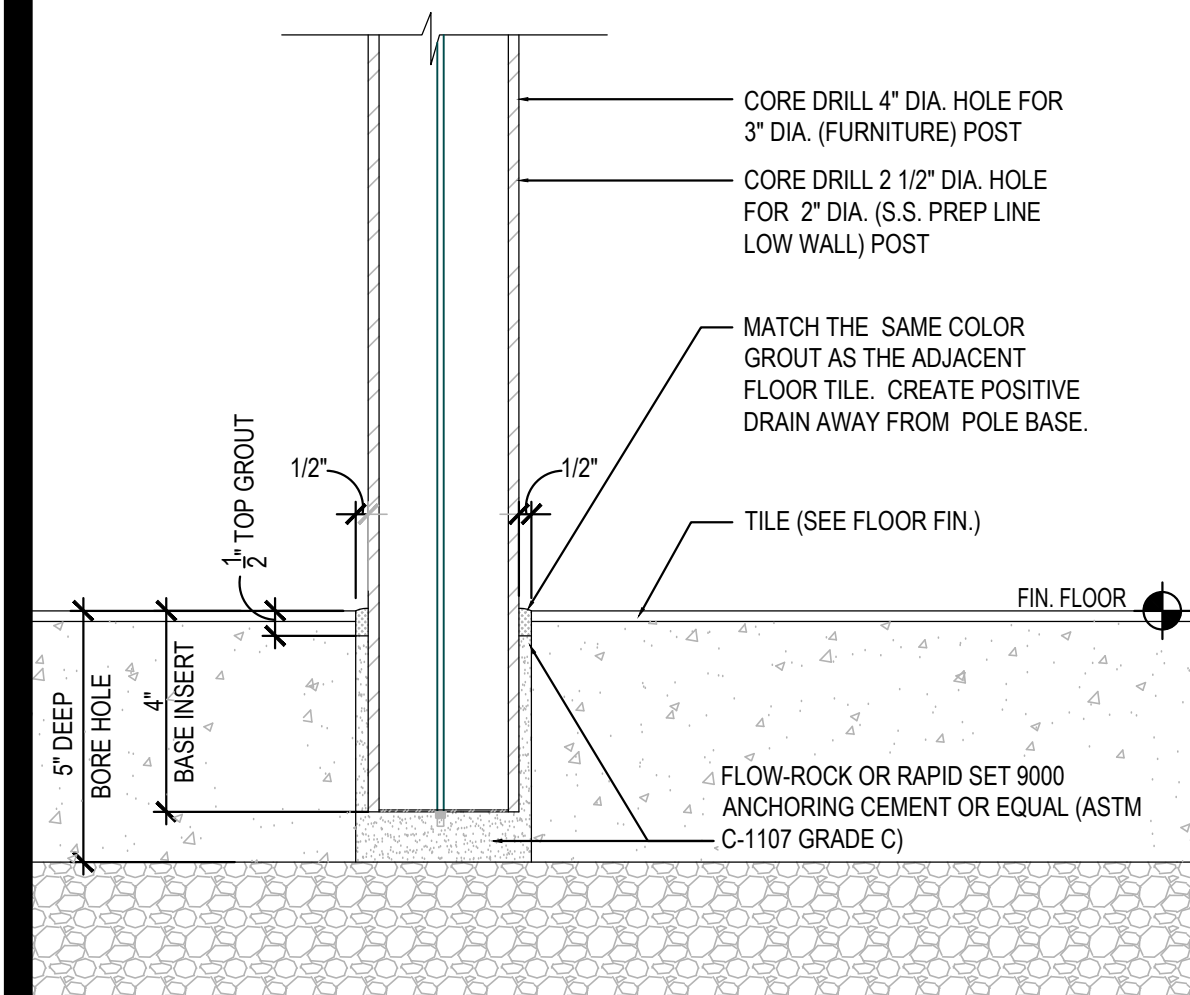


WALL BASE @ FREEZER

2

Scale= 3" = 1'-0"

A-404

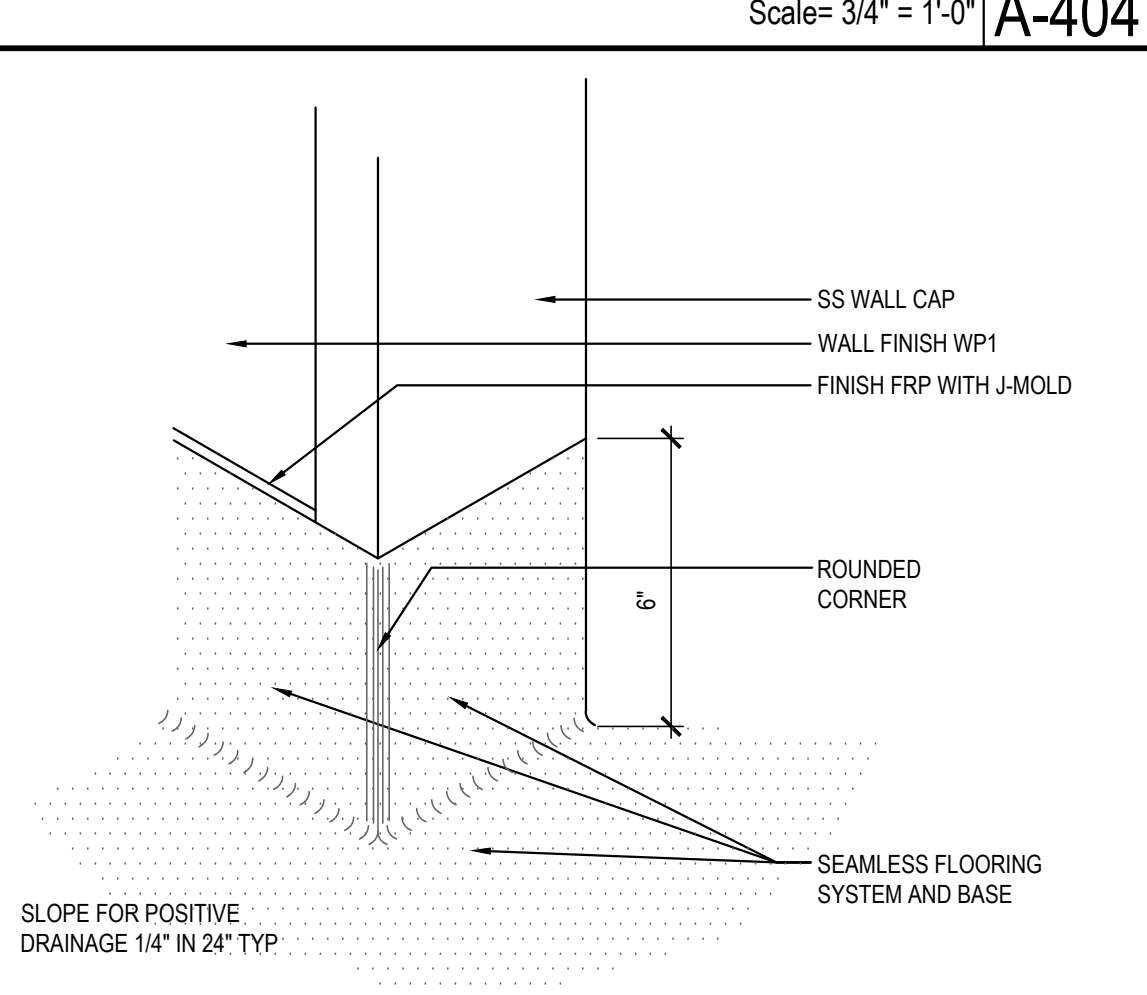


STANDARD CORE DRILL TABLE

17

NTS

A-404

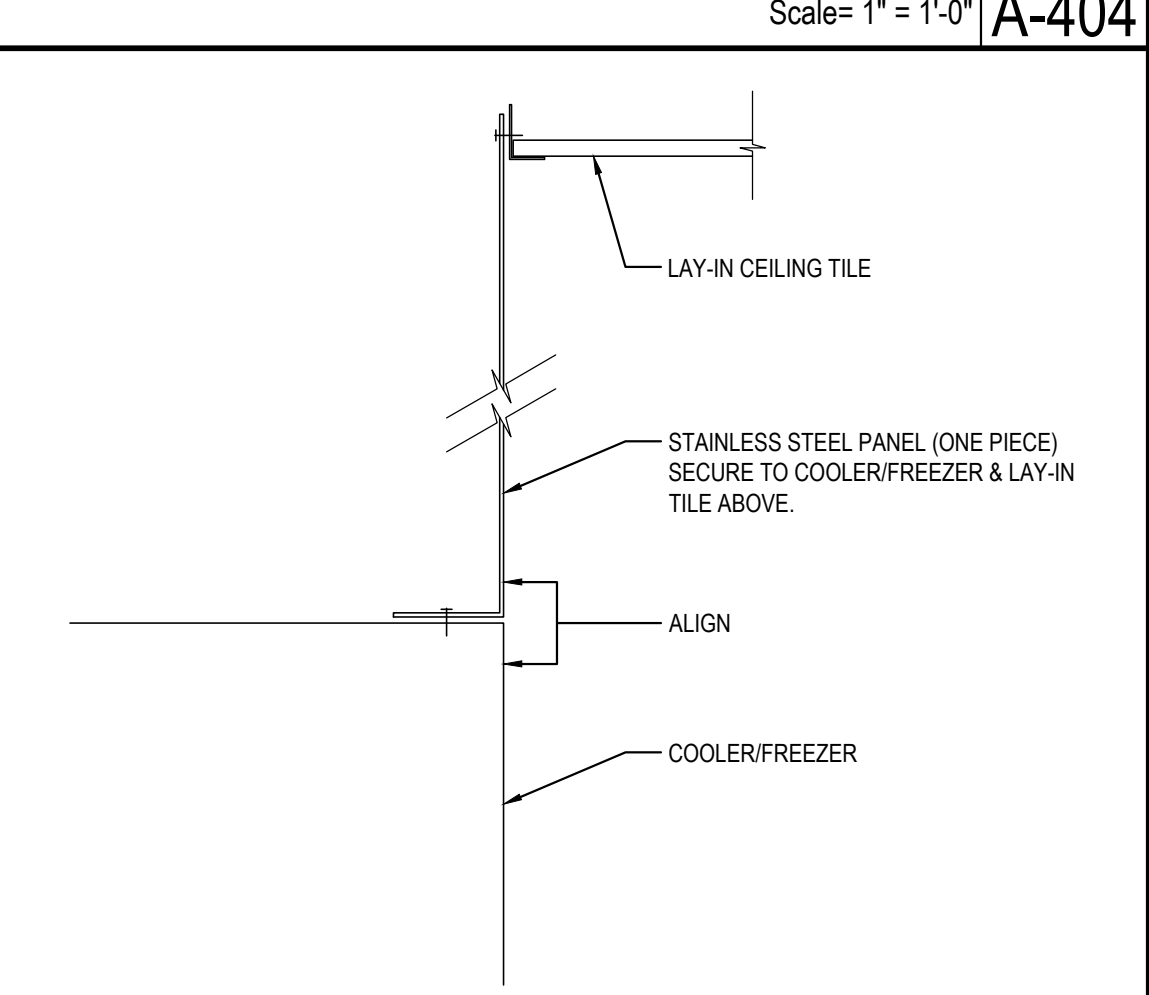


TYPICAL WALL BASE

12

Scale= 3" = 1'-0"

A-404

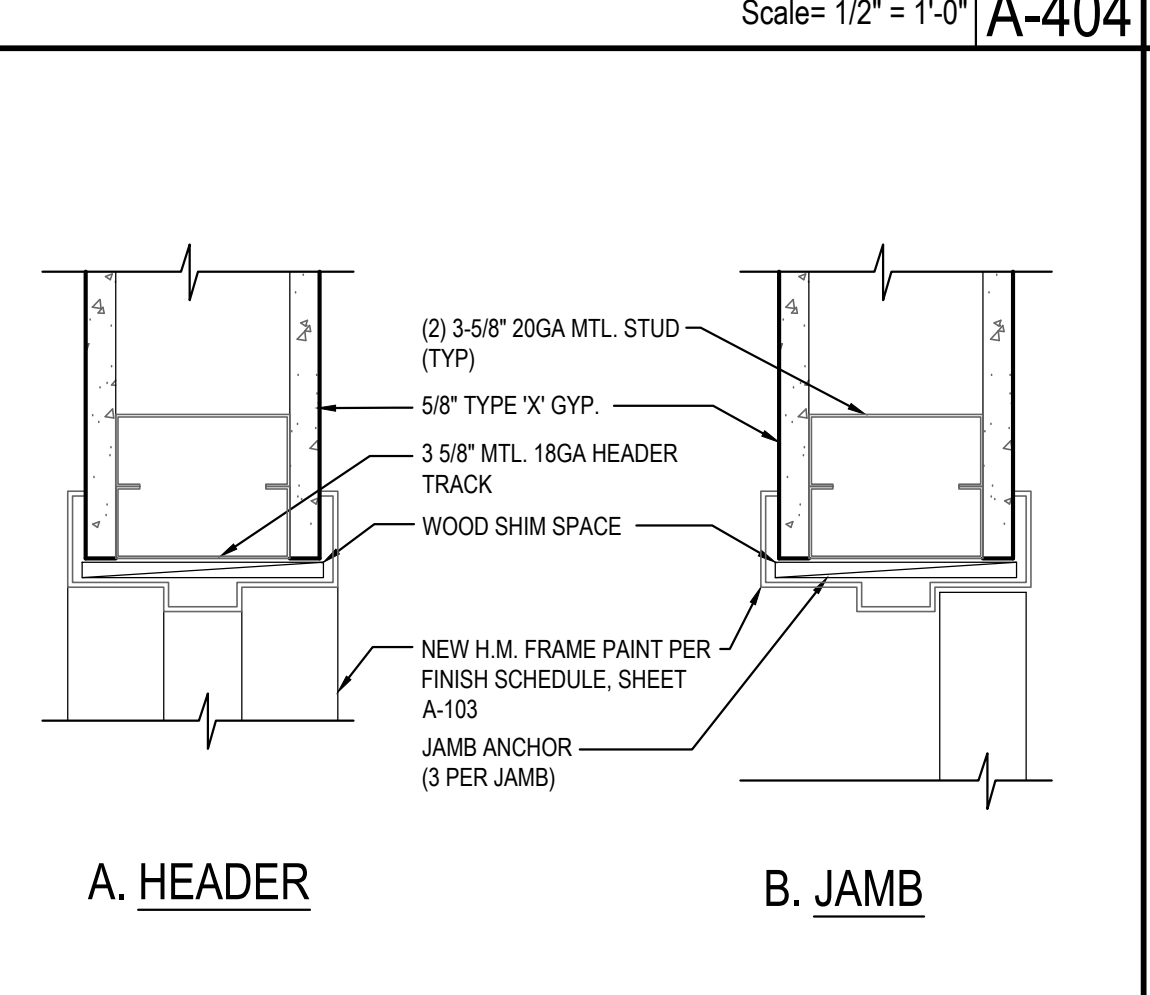


S.S. DETAIL @ COOLER / FREEZER

8

Scale= 1/2" = 1'-0"

A-404

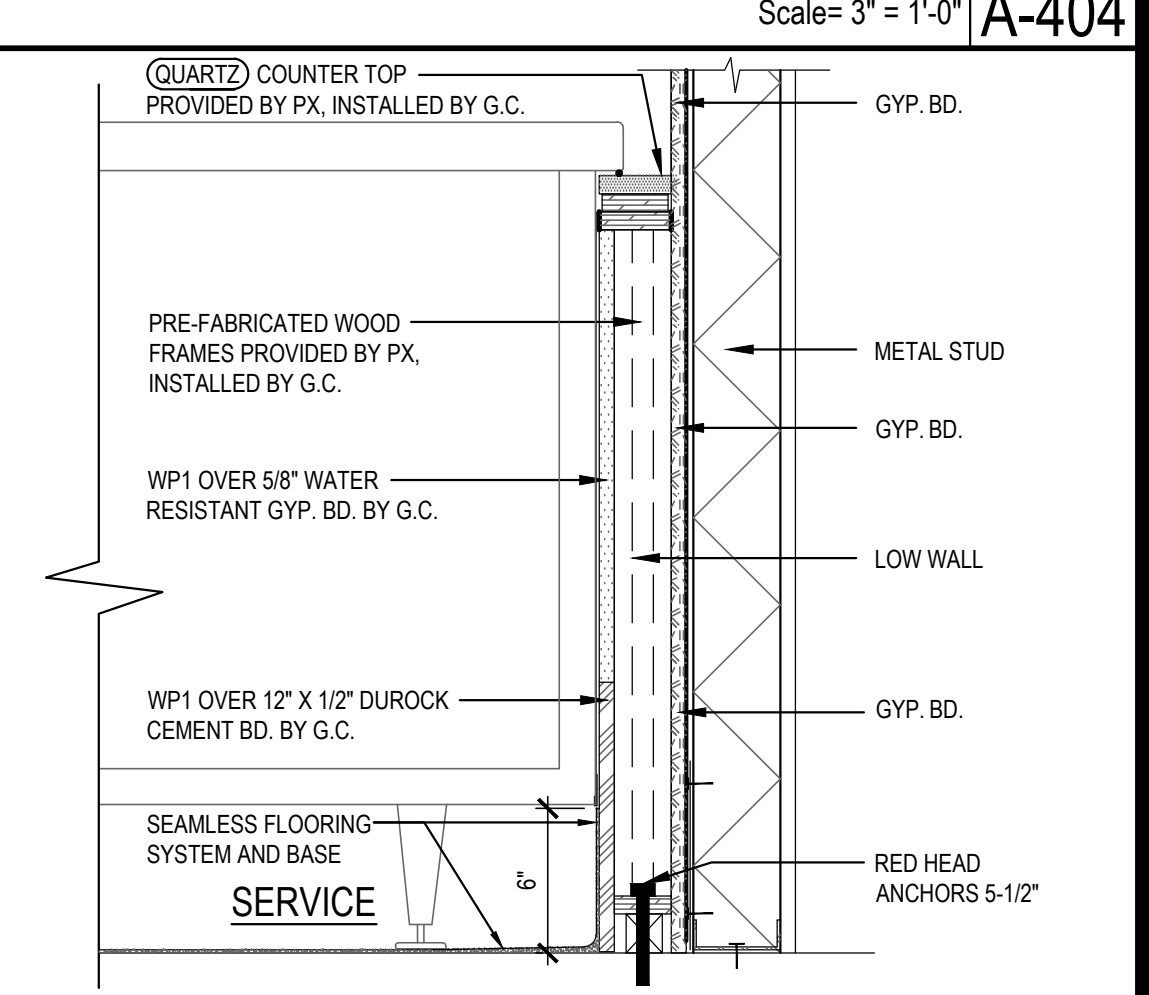


INTERIOR DOOR HEADER/JAMB

5

Scale= 3" = 1'-0"

A-404



SERVICE COUNTER END DETAIL

1

Scale= 1 1/2" = 1'-0"

A-404



PANDA EXPRESS, INC.
1683 Walnut Grove Ave.
Rosemead, California
91770
Telephone: 626.799.9698
Facsimile: 626.372.8288

All ideas, designs, arrangement and plans indicated or represented by this drawing are the property of Panda Express Inc. and were created for use on this specific project. None of these ideas, designs, arrangements or plans may be used by or disclosed to any person, firm, or corporation without the written permission of Panda Express Inc.

REVISIONS:

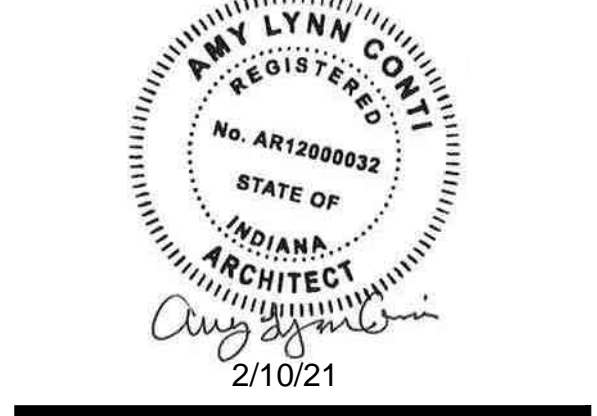
| | |
|--|--|
| | |
| | |
| | |
| | |
| | |
| | |
| | |
| | |
| | |
| | |

ISSUE DATE:

| | |
|------------------|------------|
| STATE PERMIT SET | 02/10/2021 |
| | |
| | |
| | |
| | |
| | |
| | |
| | |
| | |
| | |

DRAWN BY: AF

PANDA PROJECT #: D8059
ARCH PROJECT #: JCDT20-0255



PANDA EXPRESS
TRUE WARM & WELCOME
1395 N. GREEN STREET
BROWNSBURG, IN 46112

A-404
ARCHITECTURAL
DETAILS

TRUE WARM & WELCOME 2300 R4