

# RECORD OF SURVEY

OF LAND OF

**PETER BERTORELLI**

BEING LOTS 4 & 5 OF TRACT NO. 2977

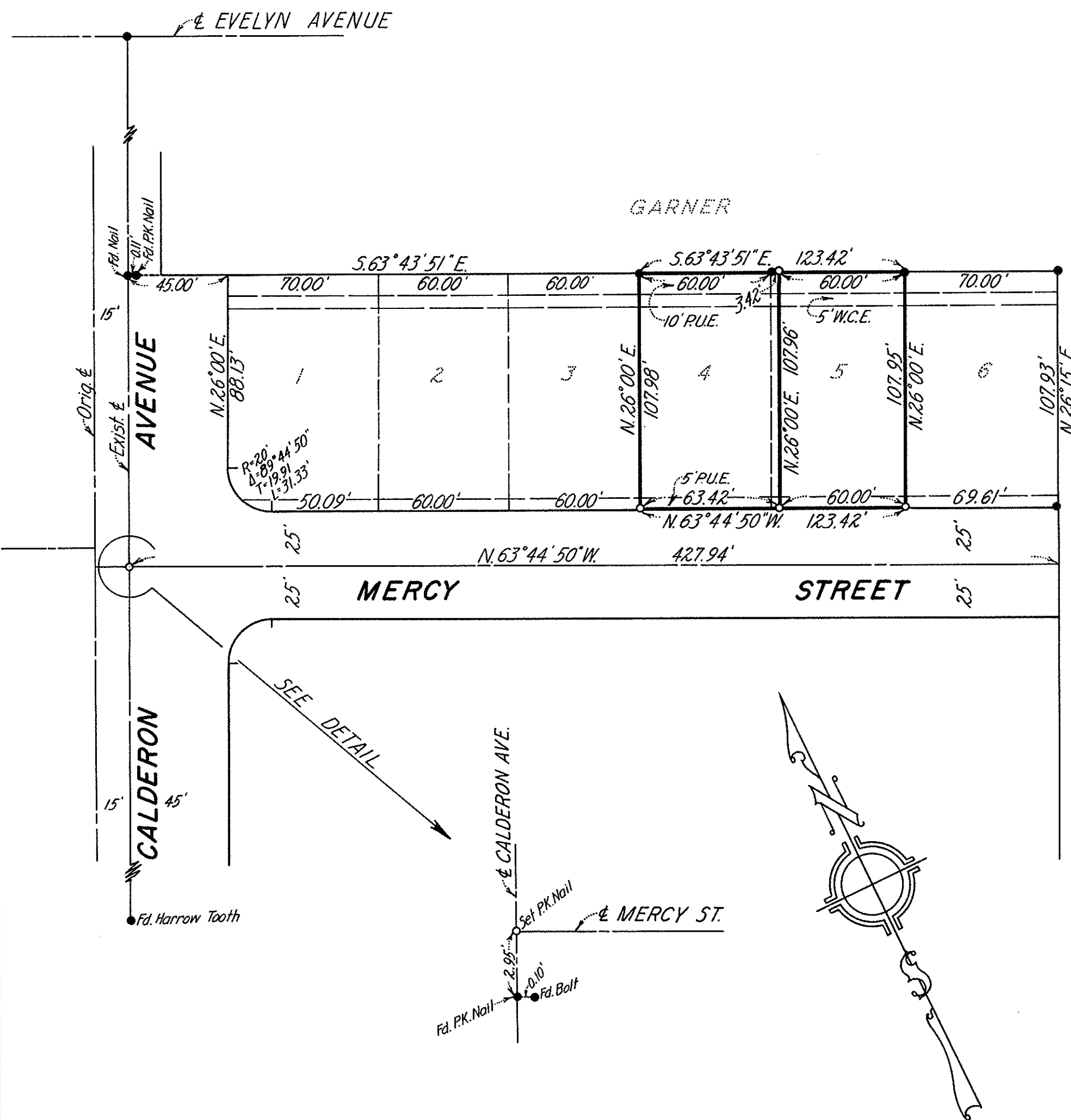
CALDERON PALMS

CITY OF MT. VIEW

SANTA CLARA COUNTY, CALIFORNIA

MARCH, 1962

SCALE, 1"=50'



## SURVEYOR'S CERTIFICATE

This map correctly represents a survey made by me or under my direction in conformance with the requirements of Chapter 15 of Division 3 of the Business and Professions Code at the request of John C. Williams in March, 1962.

*Lloyd B. Baker*  
LLOYD B. BAKER  
Registered Civil Engineer No. 7848

## COUNTY SURVEYOR'S CERTIFICATE

This map has been examined for conformance with the requirements of Chapter 15 of Division 3 of the Business and Professions Code this 3<sup>rd</sup> day of April, 1962.

JAMES T. POTT, County Surveyor

by: *Joseph R. Sawyer*  
Deputy

2169030.

## COUNTY RECORDER'S CERTIFICATE

Filed for record this 3<sup>rd</sup> day of April, 1962, at 3:08 P.M. in Book 145 of Maps at Page 5, at the request of Lloyd B. Baker.

PAUL R. TEILH, County Recorder

\$5.00 by: *Donald E. Robinson*  
Deputy

## BASIS OF BEARINGS & NOTES

The bearing of the center line of Calderon Avenue (N. 26° 00' E.) as shown on "Tract No. 2977, Calderon Palms," recorded in Book 136 of Maps at Page 52, Santa Clara County Records, was used as the basis of bearings shown on this map.

All distances and dimensions are shown in feet and decimals thereof.

- Indicates Iron Pipe Found
- Indicates Iron Pipe Set

Job No. 1298

# RECORD OF SURVEY

OF LAND OF

**VELA CORPORATION**

BEING A PORTION OF LOT 23 OF THE

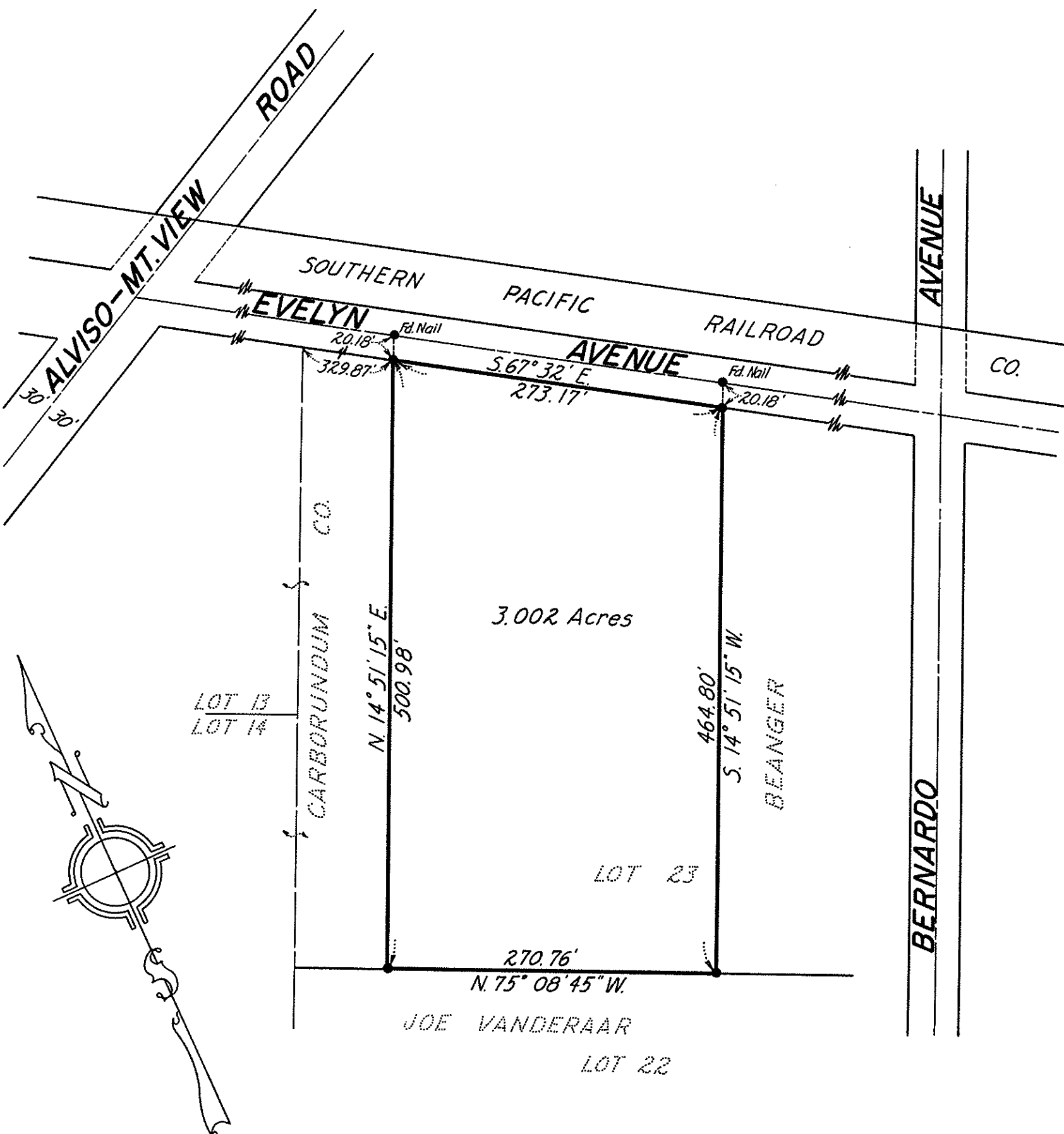
D. B. MURPHY SUBDIVISION

CITY OF MT. VIEW

SANTA CLARA COUNTY, CALIFORNIA

MARCH, 1962

SCALE, 1"=100'



## SURVEYOR'S CERTIFICATE

This map correctly represents a survey made by me or under my direction in conformance with the requirements of Chapter 15 of Division 3 of the Business and Professions Code at the request of Albert J. Giannotti in March, 1962.

*Lloyd B. Baker*  
LLOYD B. BAKER  
Registered Civil Engineer No. 7848

## COUNTY SURVEYOR'S CERTIFICATE

This map has been examined for conformance with the requirements of Chapter 15 of Division 3 of the Business and Professions Code this 2<sup>nd</sup> day of April, 1962.

JAMES T. POTT, County Surveyor

by: *Joseph R. Sawyer*  
Deputy

2168237

## COUNTY RECORDER'S CERTIFICATE

Filed for record this 3<sup>rd</sup> day of April, 1962, at 8:57 A.M. in Book 145 of Maps at Page 5, at the request of Lloyd B. Baker.

PAUL R. TEILH, County Recorder

\$5.00 by: *Donald E. Robinson*  
Deputy

## BASIS OF BEARINGS & NOTES

The bearing of the southwesterly line of Evelyn Avenue (S. 67° 32' E.) as shown on the "Map of Arques Subdivision No. 1," Santa Clara County Records, was used as the basis of bearings shown on this map.

All distances and dimensions are shown in feet and decimals thereof.

- Indicates Iron Pipe Found
- Indicates Iron Pipe Set

Job No. 1306