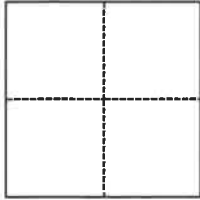


# CORNER RECORD

Agency Index BK 147 PG 78  
Document Number CR 15994

City of Berkeley (APN 53-1716-3) County of Alameda, California  
Brief Legal Description (B0221) Monument replacement at Telegraph Avenue and Stuart Street

## CORNER TYPE



☐ Government Corner ☒ Control  
☐ Meander ☐ Property  
☐ Rancho ☐ Other

Date of Survey May 3, 2021

## COORDINATES (Optional)

N.                      E.                     

Elevation                     

Units ☐ Metric ☒ U.S. Survey Foot

Horizontal Datum                     

Zone                      Epoch Date                     

Vertical Datum                     

☐ Complies with Public Resources Code §§8801-8819

☐ Complies with Public Resources Code §§8890-8902

PLS Act Ref.: ☐ 8765(d) ☒ 8771 ☐ 8773 ☐ Other:

Corner/  
Monument: ☐ Left as found ☐ Established ☒ Rebuilt ☐ Pre-Construction  
☐ Found and tagged ☐ Reestablished ☐ Referenced ☒ Post-Construction

Narrative of corner identified and monument as found, set, reset, replaced, or removed:

☒ See sheet #2 for description(s):

Reset a city monument that was destroyed during waterline construction. A new city monument was referenced as per CR 11465 with four found reference points as shown on page 2.

Reference EBMUD Field Book 4591, Page 56 (Clarke/Chou)

## SURVEYOR'S STATEMENT

This Corner Record was prepared by me or under my direction in conformance with

the Professional Land Surveyors' Act on

Signed *James K. Burke* P.L.S. or R.C.E. No. 8889



## COUNTY SURVEYOR'S STATEMENT

This Corner Record was received

and examined and filed

Signed *D. Ian Wilson* P.L.S. or R.C.E. No. 7010

Title ALAMEDA COUNTY SURVEYOR

County Surveyor's Comment



BERKELEY

ALAMEDA COUNTY

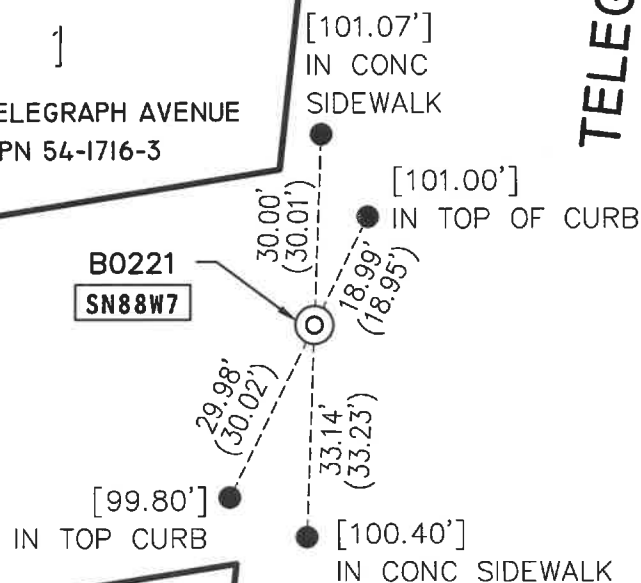
2  
LEONARD TRACT  
5 M 11  
BLOCK F

2744 TELEGRAPH AVENUE  
APN 54-1716-3

TELEGRAPH AVENUE  
(100' WIDE)  
(FORMERLY HUMBOLDT AVENUE)

BLOCK S  
3  
9

B0221  
SN88W7



STUART STREET  
(60' WIDE)

6  
BLOCK G

6  
BLOCK T

## LEGEND



RESET 2" BRASS DISK WITH PUNCH, 0.6' BELOW GRADE, IN STANDARD MONUMENT WELL, BERKELEY MONUMENT # B0221, STAMPED "CITY OF BERKELEY UNLAWFUL TO DEFACE"



FOUND CONCRETE NAIL AND 1-1/2" ALUMINUM WASHER STAMPED "EBMUD MON RP" PER CR 11465

AA##A#

ALAMEDA COUNTY MONUMENT ID

[ ]

ELEVATION (MEASURED USING A LEICA DNA10 DIGITAL LEVEL) PER CR 11464

( )

RP DISTANCE PER CR 11465

ADDRESS: 2744 TELEGRAPH AVENUE

APN: 54-1716-3

SCALE  
1" = 30'

