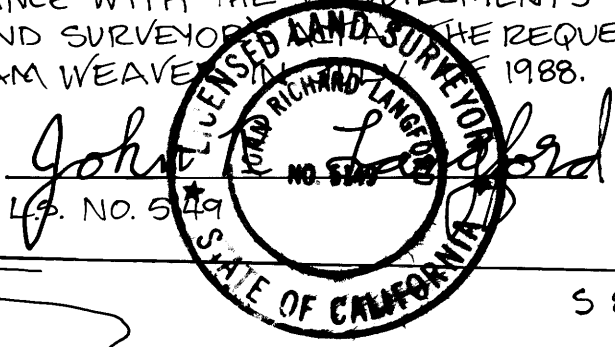


RECORD OF SURVEY NO. 32-33

LOCATED IN THE NE 1/4, SEC. 26, T5N, R24E, MDB+M, MONO COUNTY, CALIFORNIA.

SURVEYOR'S CERTIFICATE

THIS MAP CORRECTLY REPRESENTS A SURVEY MADE BY ME OR UNDER MY DIRECTION IN CONFORMANCE WITH THE REQUIREMENTS OF THE LAND SURVEYOR'S ACT, AS REQUESTED BY WILLIAM WEAVER, 1988.



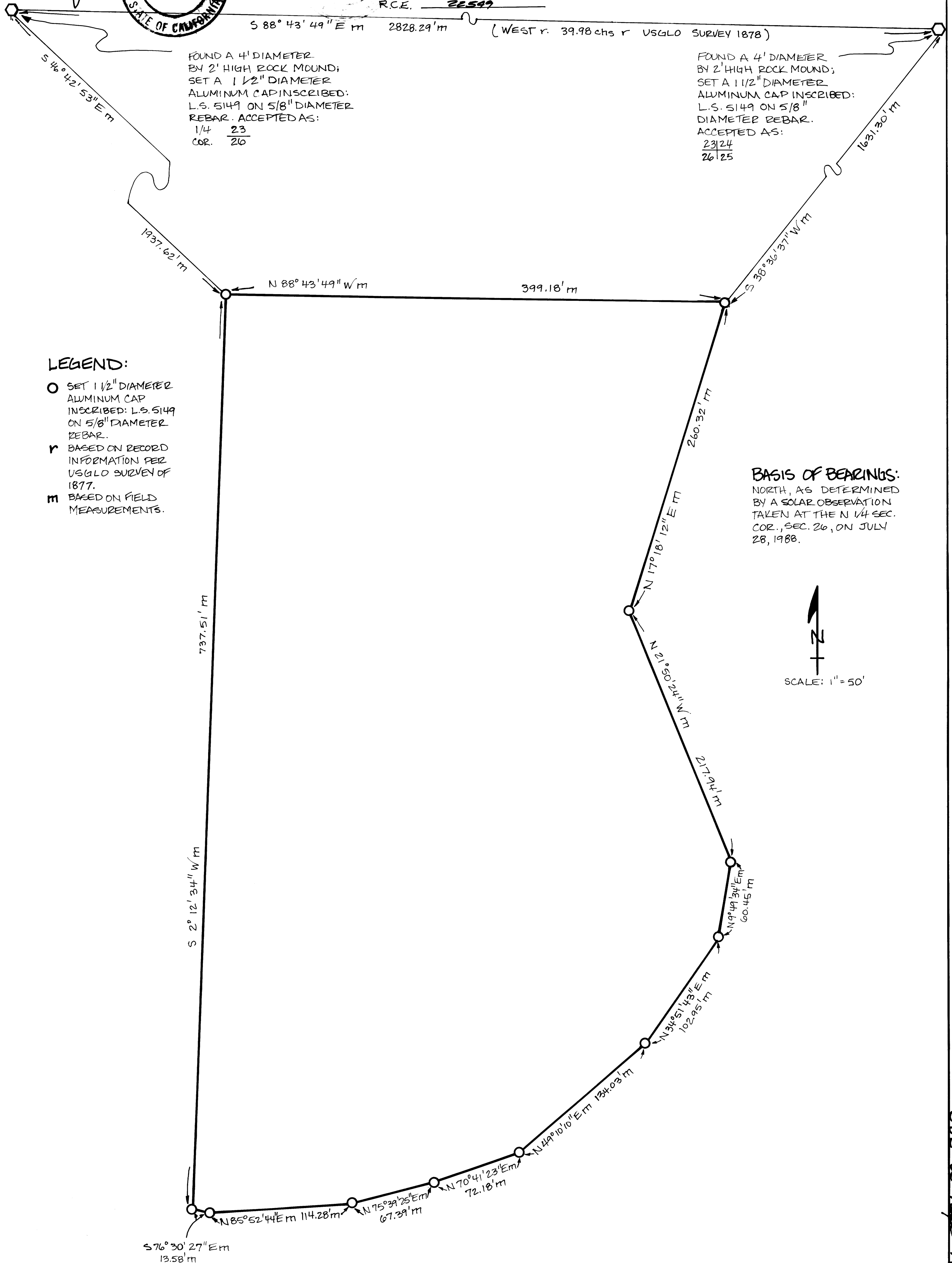
COUNTY SURVEYOR'S CERTIFICATE

THIS MAP HAS BEEN EXAMINED IN ACCORDANCE WITH SECTION 8766 OF THE LAND SURVEYOR'S ACT THIS 19 DAY OF October, 1988.

James M. Ward
COUNTY SURVEYOR
R.C.E. 22549

RECORDER'S CERTIFICATE

FILED THIS 25 DAY OF October, 1988, AT 9:11 A.M./P.M. IN BOOK 2 OF RECORD OF SURVEYS AT PAGE 10 AT THE REQUEST OF WILLIAM WEAVER. INSTRUMENT NO. 3857 FEE: \$5.00
BENNY NOLAN
COUNTY RECORDER BY: *Wesley M. Miller*



26 of 2 Page 34