

PARCEL MAP No. 1927

BEING PORTIONS OF SECTIONS 1 & 12, T.5N., R.10E. AND SECTIONS 6 & 7, T.5N., R.11E.
M.D.M., AMADOR COUNTY, CALIFORNIA

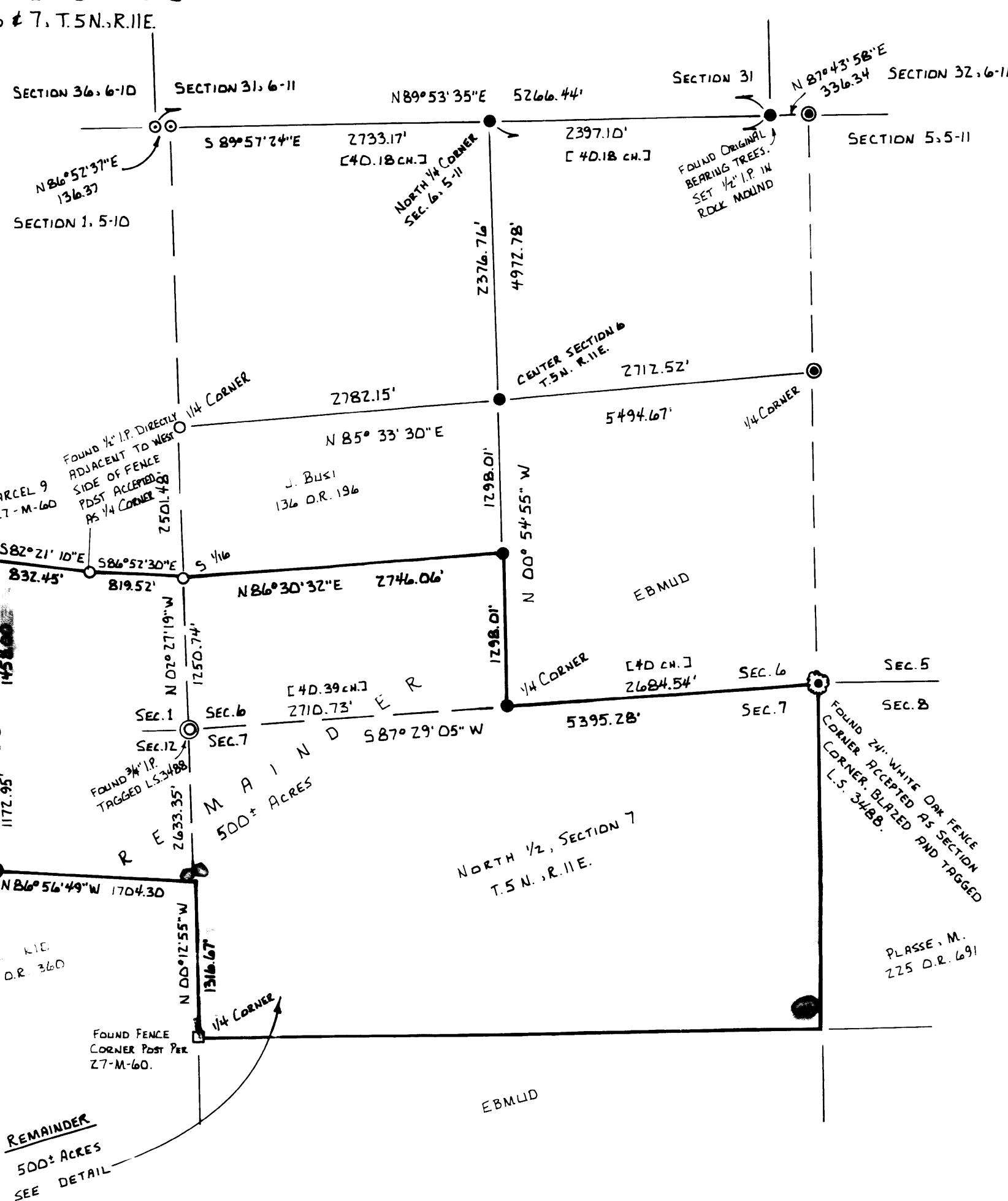
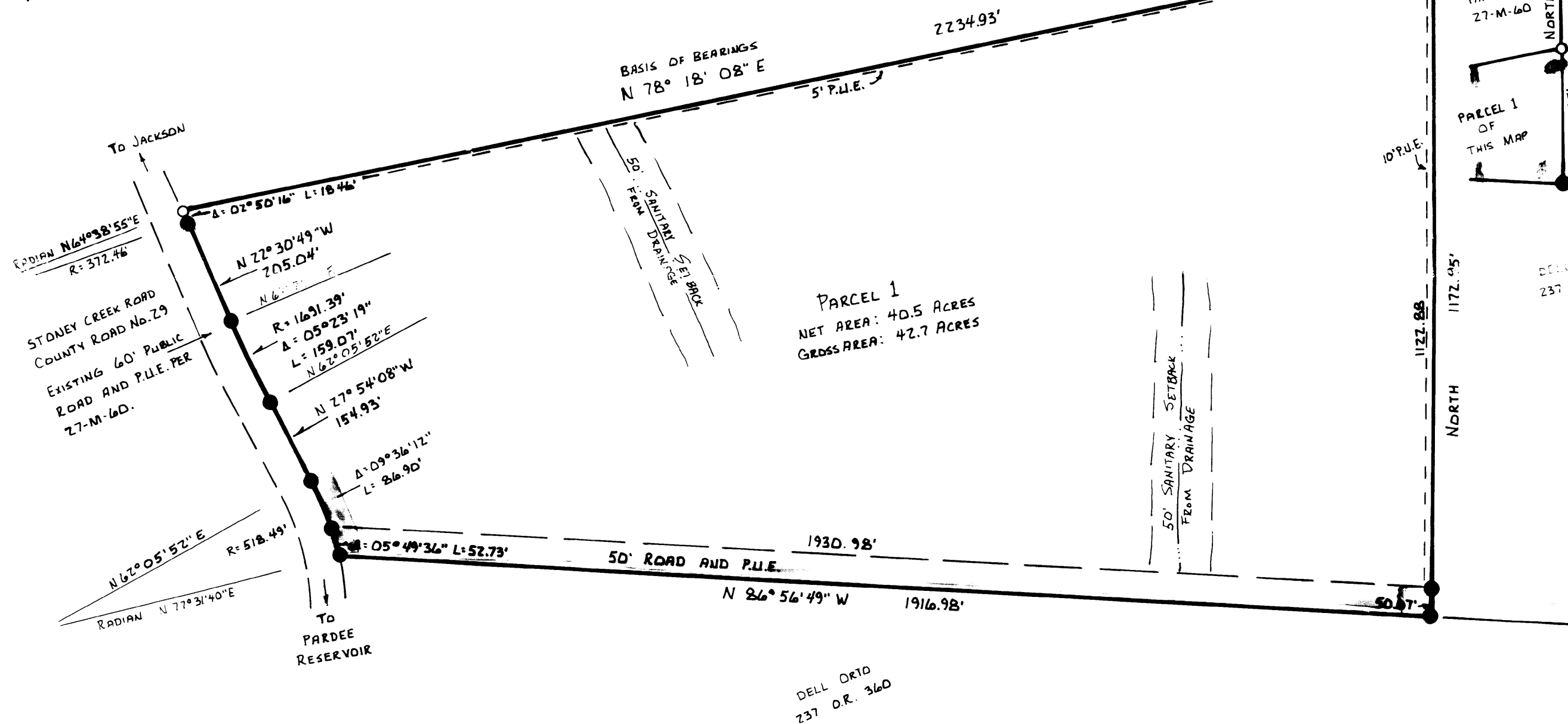
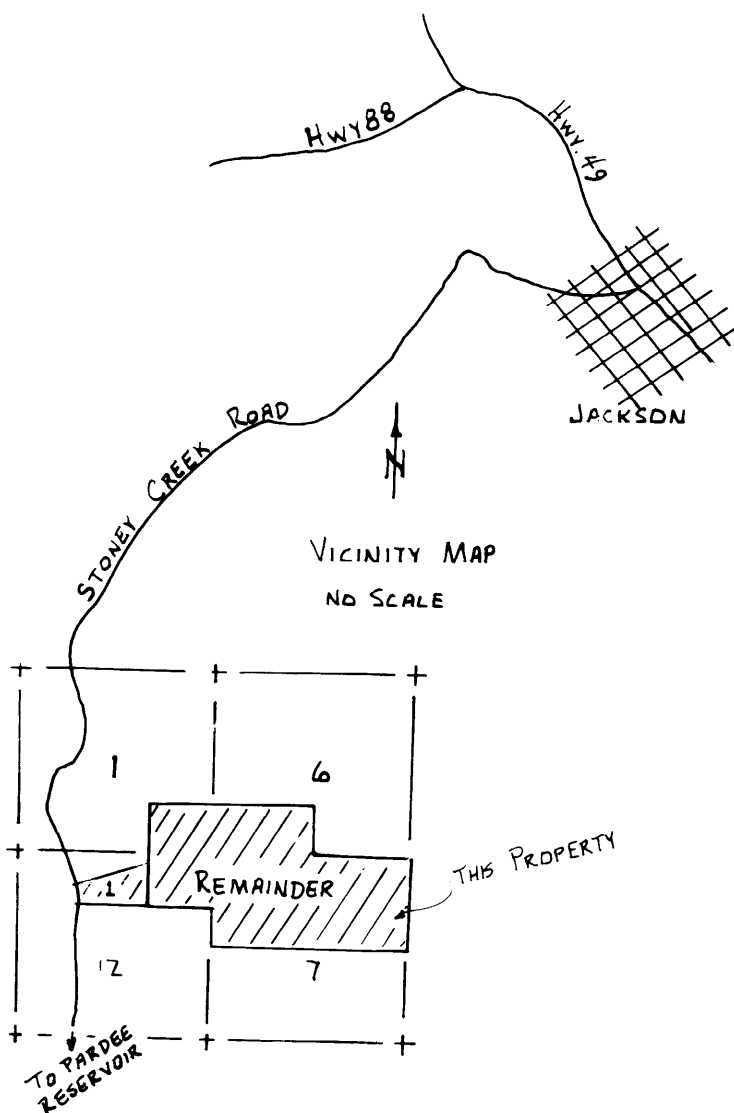
LEGEND

- FOUND 1/2" I.P. TAGGED L.S. 3488 IN ROCK MOUND FOR SECTION CORNER PER 27-M-58.
- FOUND 1/2" I.P. TAGGED L.S. 3488 PER 27-M-60.
- FOUND 3/4" I.P. TAGGED L.S. 3488 IN ROCK MOUND FOR SECTION CORNER PER 27-M-60.
- FOUND 2 1/2" BRASS CAP IN CEMENT STAMPED ACCEPTED AS SECTION CORNERS. SEE EBMUD FIELD NOTES OF 1931 SURVEY.
- SET 1/2" I.P. TAGGED L.S. 3488.
- [] INDICATES RECORD INFORMATION PER U.S. GOV'T FIELD NOTES BY H.F. TERRY IN 1870.

EBMUD STA. + ELEV.

NOTES

BASIS OF BEARINGS IS THE SOUTH LINE OF PARCEL 11, 27-M-60.
DEED REFERENCE: 325 O.R. 618
OWNER: W.L. DUNBAR



ROBERT E. HAMM, L.S. 3488
LAND SURVEYOR
114 MAIN ST.
P.O. BOX 935
JACKSON, CAL.
(209) 223-1061