

LOS ALTOS RANCHO
TRACT NO 372

SURVEYOR'S CERTIFICATE

This map correctly represents a survey made by me or under my direction in conformance with the requirements of Chapter 15 of Division 3 of the Business and Professions Code of the request of William P. Ellis in October 1957.

Don Reinohl
Registered Civil Engineer No. 4000

COUNTY SURVEYOR'S CERTIFICATE

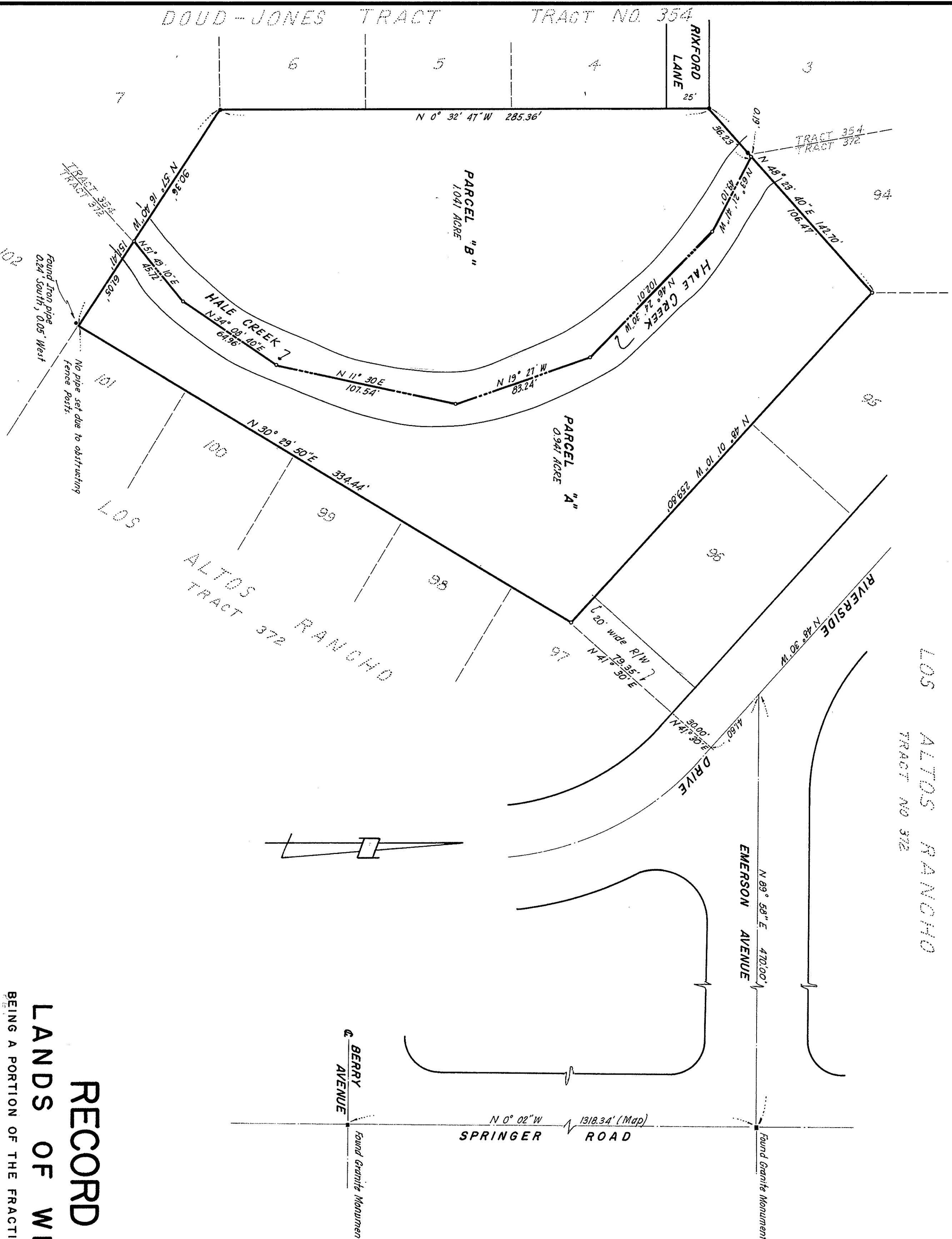
This map has been examined for conformance with the requirements of Chapter 15 of Division 3 of the Business and Professions Code this 27th day of November, 1957

JAMES B. ENOCHS
Acting County Surveyor
By *James B. Enoch* Deputy
1402982

RECORDER'S CERTIFICATE

Filed for record this 8th day of November 1957, at 3:10 P.M. in Book 88 of Maps at Page 6 at the request of Don Reinohl.

#500
SYL C. TULLY
County Recorder
By *S. B. Tully* Deputy



- NOTES
- Indicates iron pipe found
 - Indicates iron pipe set

BASIS OF BEARINGS

The bearing N 0° 02' W the center line of Springer Road, as same is shown on the map of Tract No. 372 "Los Altos Rancho," recorded in Book 13 of Maps at Pages 29-30 in the office of the Recorder, Santa Clara County California, was taken as the Basis of Bearings for this map.

RECORD OF SURVEY
LANDS OF WILLIAM P. ELLIS
BEING A PORTION OF THE FRACTIONAL EAST HALF OF SEC. 32, T6S, R11W, MDM
CITY OF LOS ALTOS, SANTA CLARA COUNTY, CALIFORNIA

OCTOBER 1957 44 SCALE 1" = 40'

DON REINOHL
Consulting Engineer
Los Altos
San Jose