

# CORNER RECORD

Agency Index

BOOK 118 PAGE 58

Document Number

CR 12623City of OAKLANDCounty of ALAMEDA, California

## Brief Legal Description

CITY OF OAKLAND MONUMENT 4SE22 AS SHOWN UPON MONUMENT MAP 1509B490\_304 AND THE MAP OF FORESTLAND (4-MAPS-52) NEAR 7224 SNAKE ROAD (APN 48E-7333-40-1).

## CORNER TYPE

## COORDINATES (Optional)

N. 2132128.2 ± E. 6070781.7 ±☒ Elevation☐ UnitsMetric ☐U.S. Survey Foot ☒☐ Horizontal DatumCCS 83Zone 3

Epoch Date

Vertical Datum

Government Corner ☐

Control

Meander ☐

Property

Rancho ☐

Other

Date of Survey 12/11/2018☐ Complies with Public Resources Code §§8801-8819☐ Complies with Public Resources Code §§8890-8902RANCHO  
SAN  
ANTONIO  
(A.M. PERALTA)PLS Act Ref: ☐ 8765(d)☒ 8771☐ 8773☐ Other:Corner/  
Monument: ☒ Left as found☐ Established☐ Rebuilt☒ Pre-Construction☐ Found and tagged☐ Reestablished☒ Referenced☐ Post-Construction

Narrative of corner identified and monument as found, set, reset, replaced, or removed:

☒ See sheet #2 for description (s):

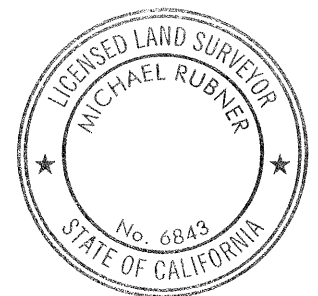
FOUND MONUMENT THAT COULD BE DAMAGED OR DESTROYED BY A PROPOSED GAS LINE CONSTRUCTION PROJECT. MONUMENT WAS REFERENCED AS SHOWN ON PAGE 2 OF 2.

THE PURPOSE OF THIS CORNER RECORD IS TO PRESERVE THE LOCATION OF THE MONUMENT PRIOR TO CONSTRUCTION. NO ATTEMPT WAS MADE TO DETERMINE THE RELATIONSHIP BETWEEN THE MONUMENT AND PROPERTY LINES, RIGHT-OF-WAY LINES, CENTERLINES OR OTHER MONUMENTS.

## SURVEYOR'S STATEMENT

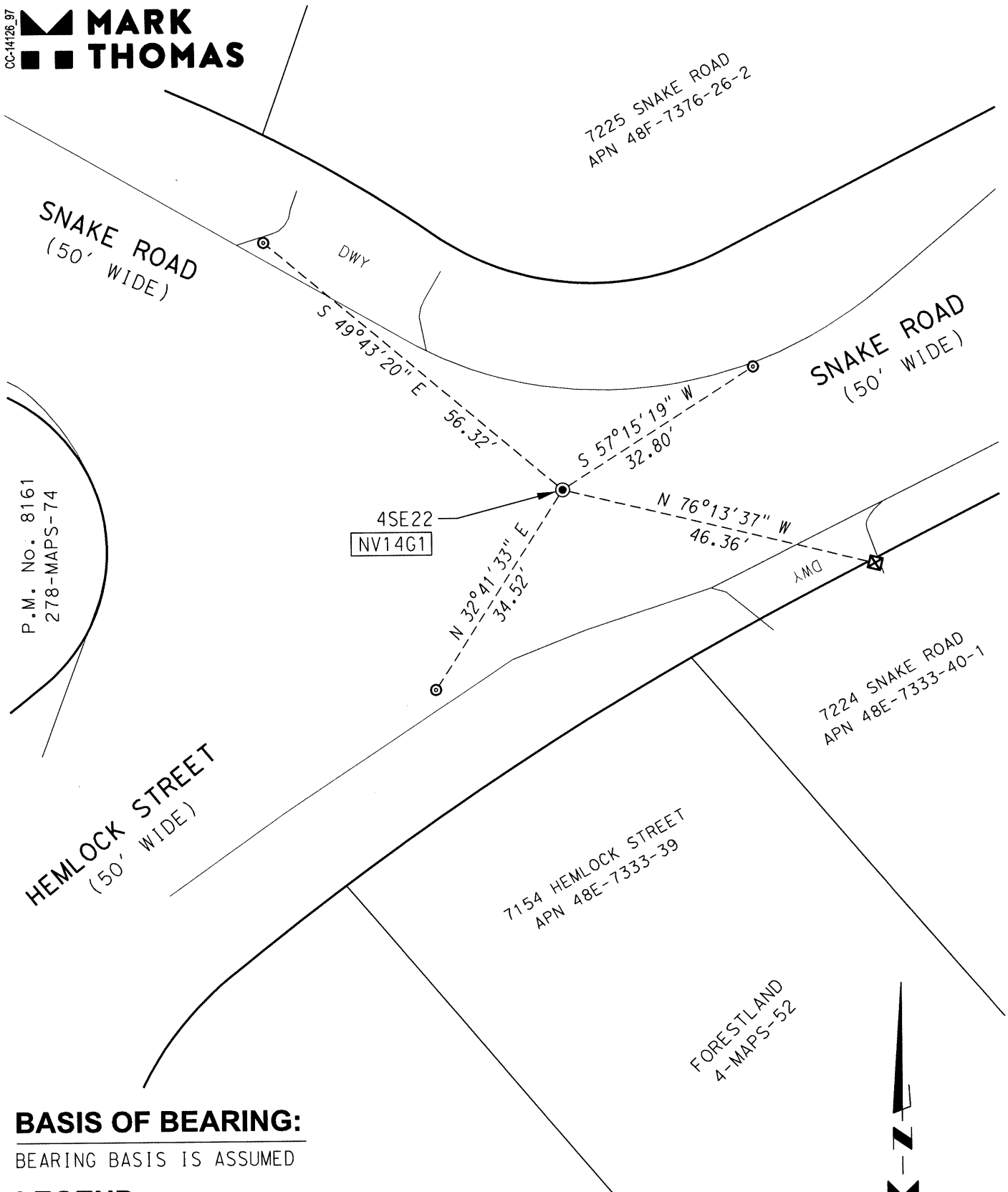
This Corner Record was prepared by me or under my direction in conformance with the Professional Land Surveyors' Act on FEBRUARY 18, 2019Signed Travis Timothy Bohan P.L.S. or R.C.E. No. 8965

## COUNTY SURVEYOR'S STATEMENT

This Corner Record was received 9 JANUARY 2019and examined and filed 11 MARCH 2019Signed Michael Rubner P.L.S. or R.C.E. No. 6843Title COUNTY SURVEYOR

County Surveyor's Comment

CC-14126.97  
 **MARK THOMAS**



**BASIS OF BEARING:**

BEARING BASIS IS ASSUMED

**LEGEND:**

- FOUND CONCRETE MONUMENT WITH PIN IN WELL
- ⊠ SET CUT CROSS ON CONCRETE FOR REFERENCE POINT
- ⊙ SET MAG NAIL AND SHINER IN A.C. FOR REFERENCE POINT
- NV14G1 ALAMEDA COUNTY MONUMENT IDENTIFICATION NUMBER

