

CORNER RECORD

City of BERKELEY

Document Number

CR 3352

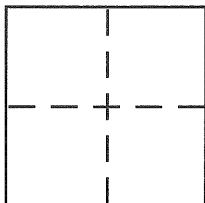
County of

ALAMEDA

, California

Brief Legal Description

MON B3544 (CITY OF BERKELEY)



CORNER TYPE

Government Corner ☐ Control ☐
Meander ☐ Property ☐
Rancho ☐ Other ☒
Date of Survey 4-20-08

COORDINATES (Optional)

N. _____
E. _____
Zone _____ NAD27 ☐ NAD83 ☐
NAD83 Epoch _____
Elev. _____
Vert. Datum: NGVD29 ☐ NAVD88 ☐
Meas. Units: Metric ☐ Imperial ☐

Corner -

Left as found ☒

Found and tagged ☐

Established ☐

Reestablished ☐

Rebuilt ☐

Identification and type of corner found: Evidence used to identify or procedure used to establish or reestablish the corner:

MONUMENT REFERENCE (SEE PAGE 2)

A description of the physical condition of the monument as found and as set or reset:

SEE PAGE 2

SURVEYOR'S STATEMENT

This Corner Record was prepared by me or under my direction in conformance with the Land Surveyor's Act on APRIL 20, 2008

Signed

[Signature]

P.L.S or R.C.E. No.

PLS 5003

COUNTY SURVEYOR'S STATEMENT

This Corner Record was received

5-2-08

and examined and filed

5-27-08

Signed

[Signature]

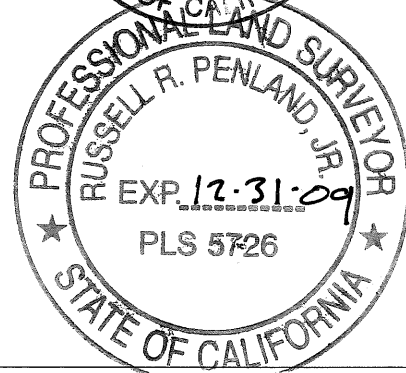
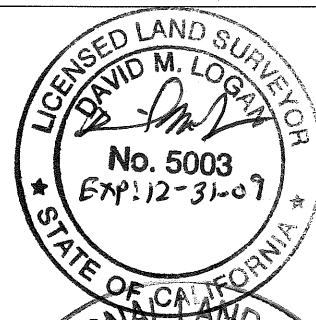
P.L.S or R.C.E. No.

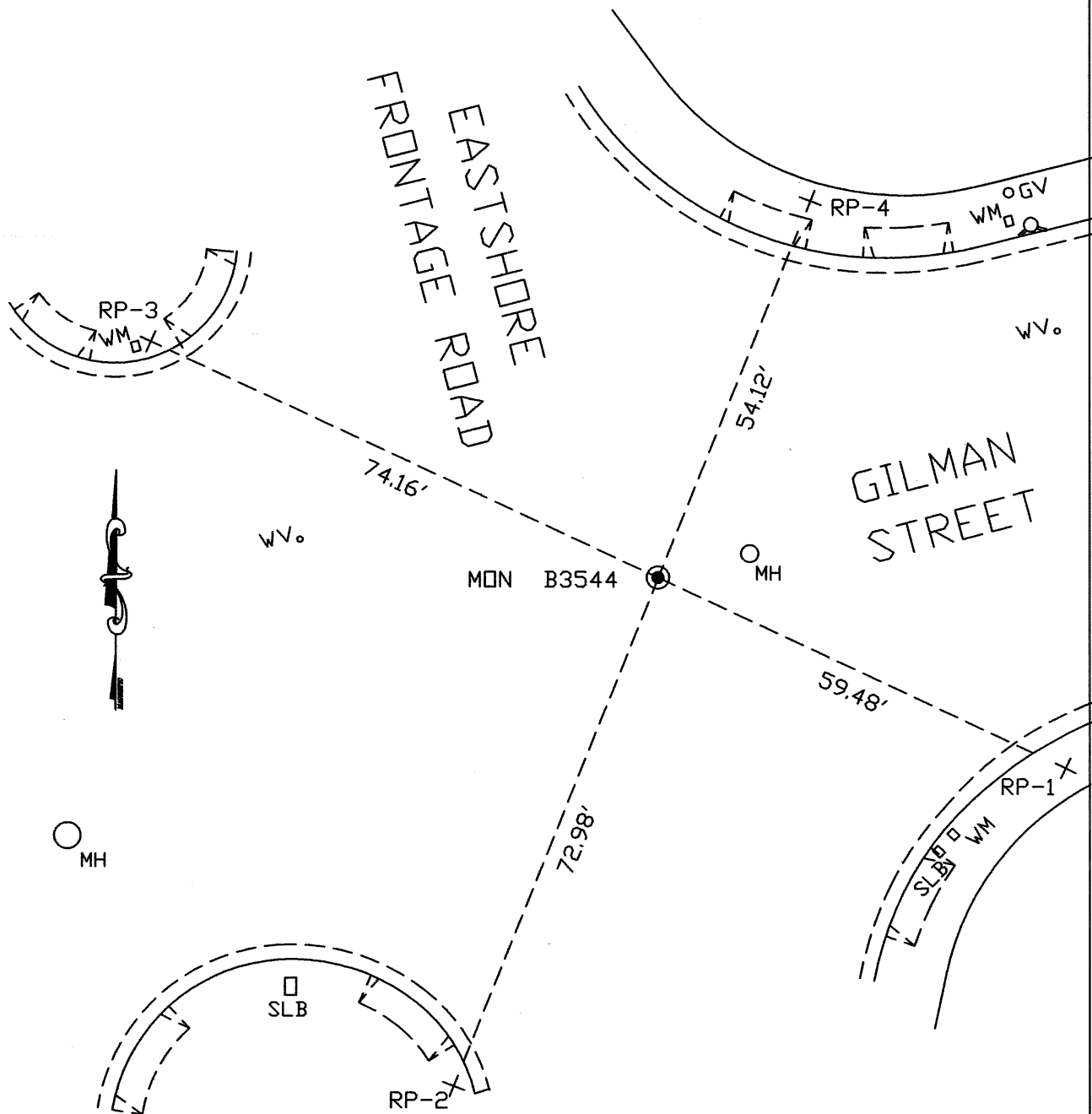
5726

Title

COUNTY SURVEYOR

County Surveyor's Comment





LEGEND

- STANDARD WELL-TYPE CITY MONUMENT WITH $\frac{1}{8}$ " PIN
- + CUT REFERENCE CROSS IN SIDEWALK

NOTE:

THE EXISTING MONUMENT AS SHOWN IS REFERENCED BY STRAIGHT LINES BETWEEN RP-1 TO RP-3 AND RP-2 AND RP-4.