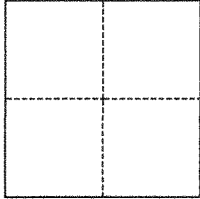


CORNER RECORD

Agency Index BK 144 PG 86
Document Number CR 15080

City of OAKLAND County of ALAMEDA, California
Brief Legal Description CITY SURVEY MONUMENT AT MILES AVE & IVANHOE RD

CORNER TYPE



☐ Government Corner ☒ Control
☐ Meander ☐ Property
☐ Rancho ☐ Other

Date of Survey January 21, 2021

COORDINATES (Optional)

N. _____ E. _____

Elevation _____

Units ☐ Metric ☒ U.S. Survey Foot

Horizontal Datum _____

Zone _____ Epoch Date _____

Vertical Datum _____

☐ Complies with Public Resources Code §§8801-8819

☐ Complies with Public Resources Code §§8890-8902

PLS Act Ref.: ☐ 8765(d) ☒ 8771 ☐ 8773 ☐ Other:

Corner/
Monument: ☒ Left as found ☐ Established ☐ Rebuilt ☒ Pre-Construction
☐ Found and tagged ☐ Reestablished ☒ Referenced ☐ Post-Construction

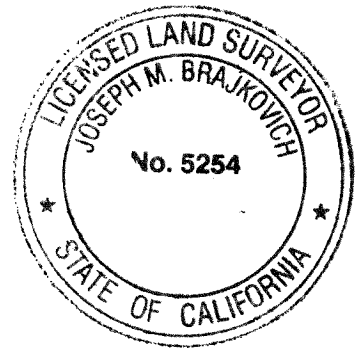
Narrative of corner identified and monument as found, set, reset, replaced, or removed:

☒ See sheet #2 for description(s):

SURVEYOR'S STATEMENT

This Corner Record was prepared by me or under my direction in conformance with
the Professional Land Surveyors' Act on 2-15-21

Signed Joseph M. Brajkovich P.L.S. or R.C.E. No. 5254



COUNTY SURVEYOR'S STATEMENT

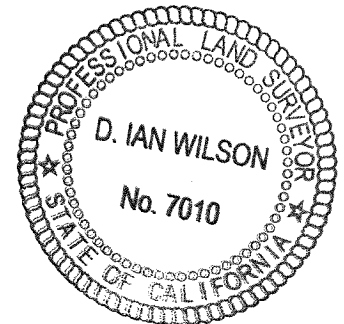
This Corner Record was received _____

and examined and filed JAN 12 2022

Signed D. Ian Wilson P.L.S. or R.C.E. No. 7010

Title ALAMEDA COUNTY SURVEYOR

County Surveyor's Comment

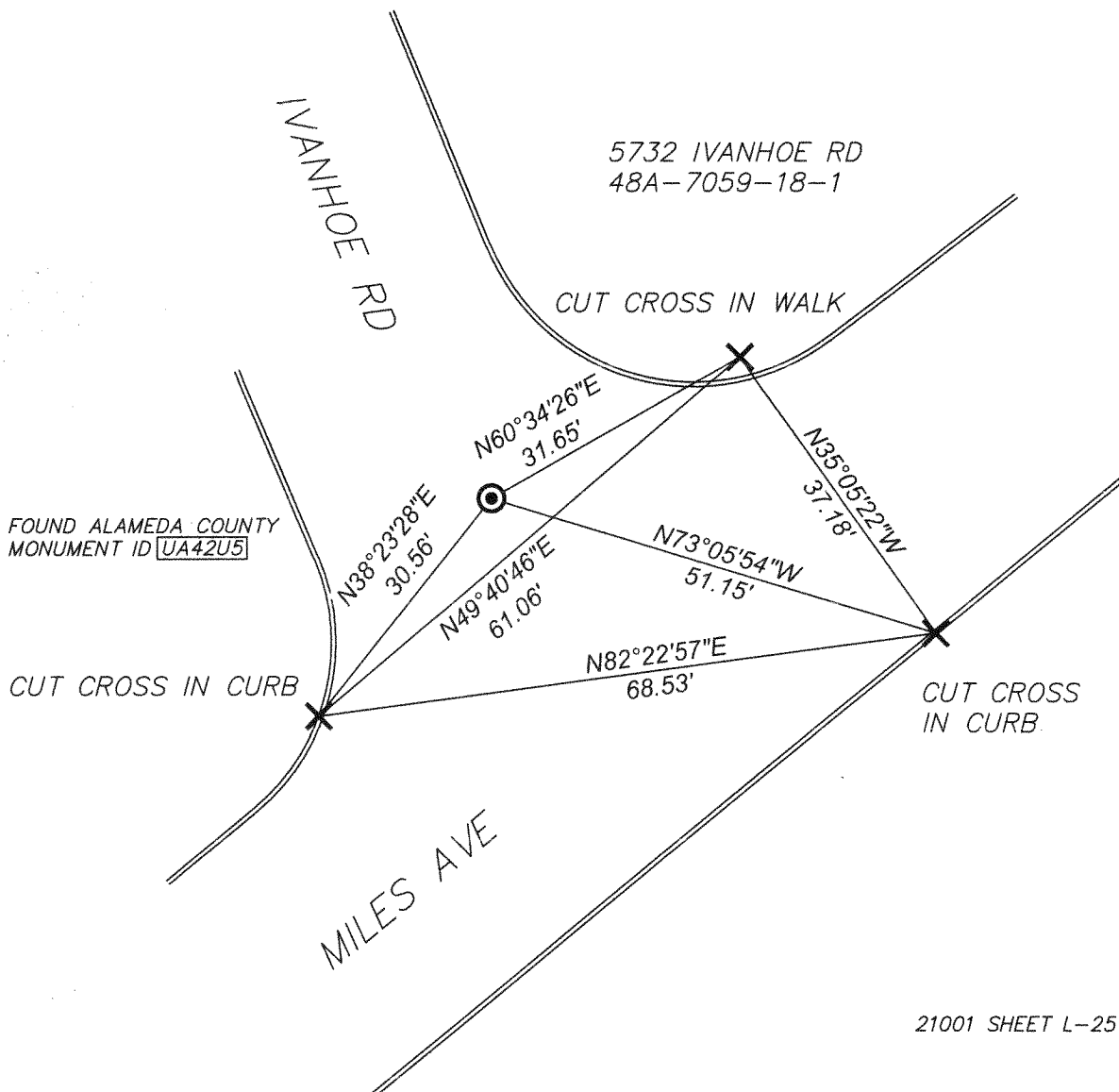


LEGEND

- AA##A# ALAMEDA COUNTY MONUMENT ID
 ##### STREET ADDRESS
 APN ASSESSOR'S PARCEL NUMBER
 X CUT CROSS SET IN CURB
 OR WALK AS DISPLAYED
 (PUNCH IN BRASS DISC IN WELL)



SCALE: 1" = 20'



21001 SHEET L-25