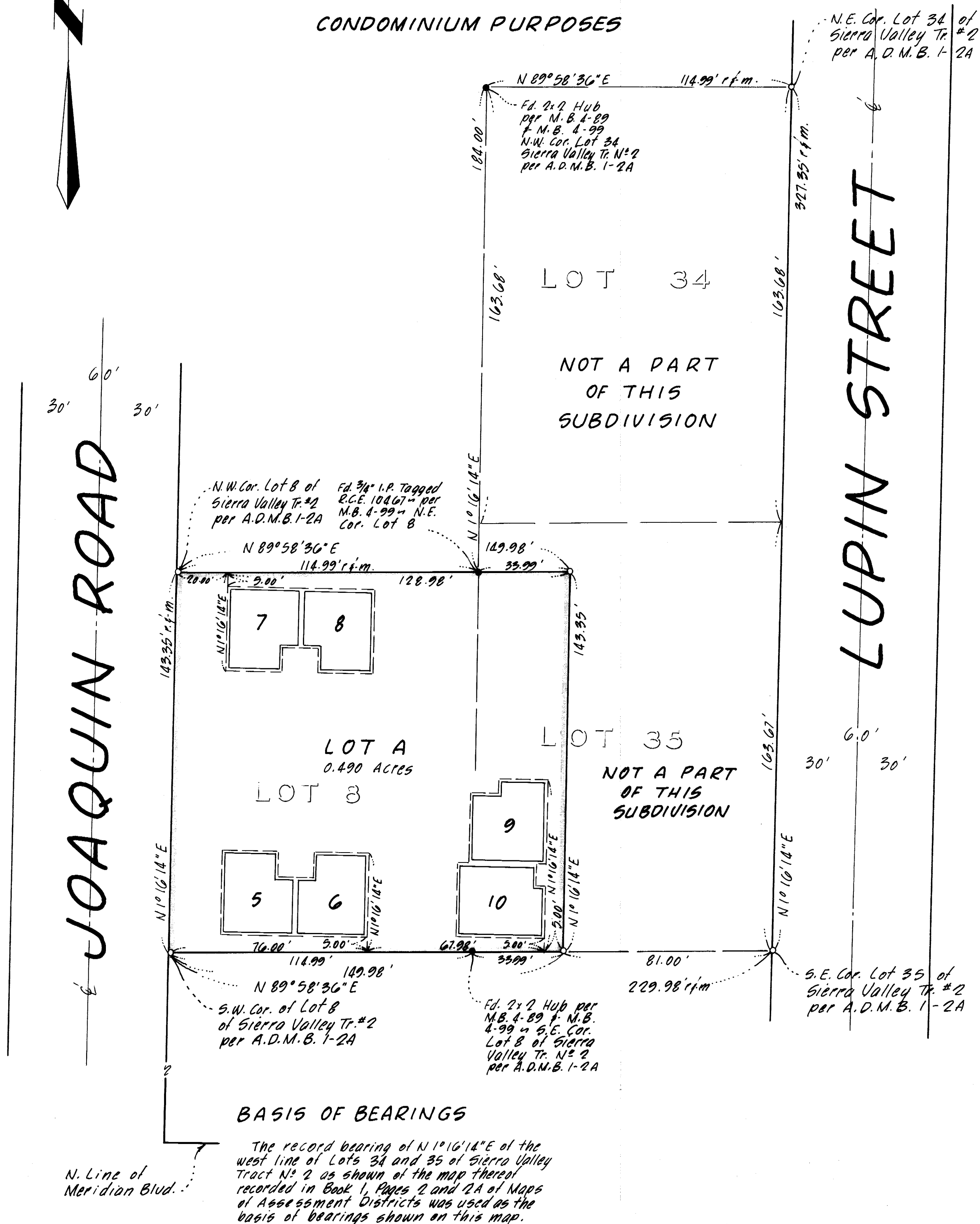


IN THE UNINCORPORATED TERRITORY OF
THE COUNTY OF MONO, STATE OF CALIFORNIA,
BEING A SUBDIVISION OF LOT 8 AND A
PORTION OF LOT 35 OF SIERRA VALLEY
TRACT N° 2 AS SHOWN ON THE MAP THEREOF
RECORDED IN BOOK 1, PAGES 2 AND 2-A OF
MAPS OF ASSESSMENT DISTRICTS, RECORDS
OF MONO, COUNTY, IN THE SOUTHWEST
QUARTER OF SECTION 34, T. 35, R. 27E, M. D. M.

CONDOMINIUM PURPOSES



LEGEND:

- Indicates a found point as noted.
- Indicates a 2" l.p. & Tag set, unless otherwise noted.

Record data shown on this map is from the map of Sierra Valley Tract No 2 recorded in Book 1, Pages 2 and 2-A of Maps of Assessment Districts.

NOTE: SEE SURVEY NOTES
ON SHEET N° 5

Vol. 8, Pg. 22-B