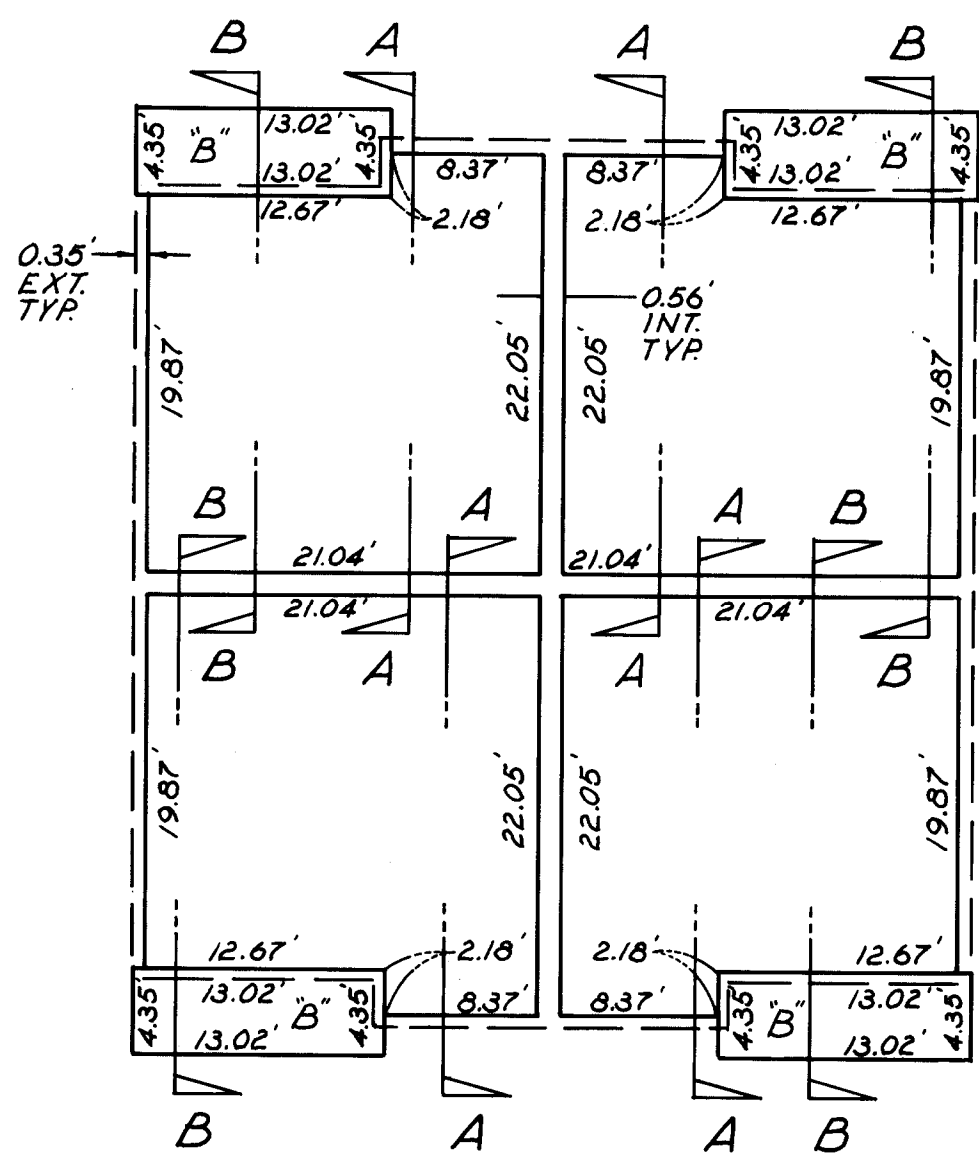
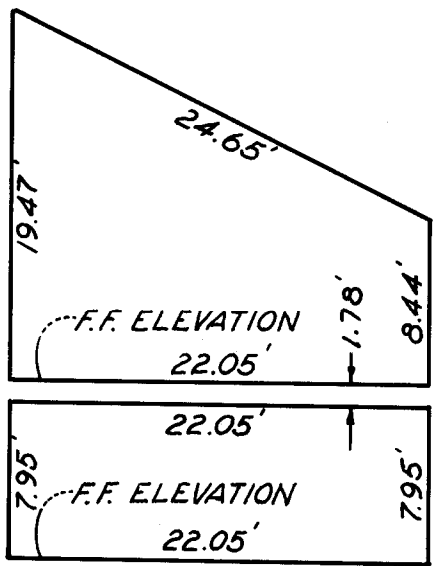


CONDOMINIUM PLAN FOR LOT "I"  
**TRACT N<sup>o</sup> 36-43-A**  
CONSISTING OF SHEETS

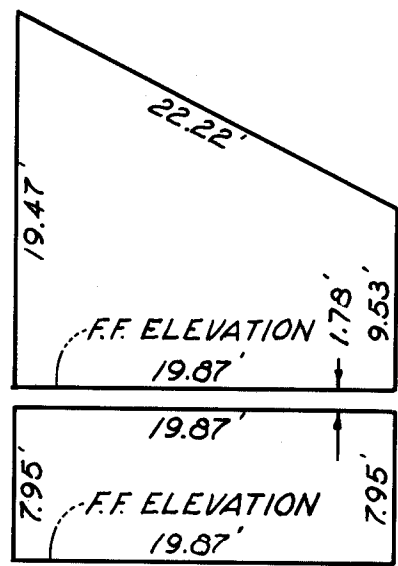
BEING ALL OF LOT "I" OF THAT CERTAIN TRACT  
N<sup>o</sup> 36-43-A, IN THE COUNTY OF MONO, STATE  
OF CALIFORNIA



FIRST FLOOR ~ UNITS  
129, 131, 133 AND 135  
SECOND FLOOR ~ UNITS  
119, 120, 121, 122, 125, 126,  
127, 128, 130, 132, 134 &  
136



SECTION A-A  
FIRST FLOOR ~ UNITS  
129, 131, 133 AND 135  
SECOND FLOOR ~ UNITS  
119, 120, 121, 122, 125, 126  
127, 128, 130, 132, 134 &  
136



SECTION B-B  
FIRST FLOOR ~ UNITS  
129, 131, 133 AND 135  
SECOND FLOOR ~ UNITS  
119, 120, 121, 122, 125, 126,  
127, 128, 130, 132, 134 &  
136

F.F. ELEVATIONS:

Units	F.F. Elevation
129, 131, 133 & 135	8000.94
119, 120, 121 & 122	8018.42
125, 126, 127 & 128	8002.29
130, 132, 134 & 136	8010.73

BENCH MARK:

Top of operating nut of fire hydrant at north  
side of Hidden Valley Road at about the midpoint  
of the south line of Tract N<sup>o</sup> 36-43  
U.S.G.S. Datum = 8022.55'

NOTE: SEE SURVEY NOTES  
ON SHEET N<sup>o</sup> 1.

C/P Val 1 Page 20-D