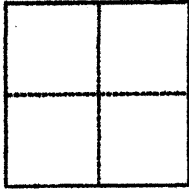


# CORNER RECORD

Agency Index <sup>3K</sup> 130 PG 99  
Document Number CR 13115

City of BERKELEY County of ALAMEDA, California  
Brief Legal Description LOT 2, SUBD. LOTS 6 & 7 HARDY TRACT 1 M 25

## CORNER TYPE



☐ Government Corner ☐ Control  
☐ Meander ☒ Property  
☐ Rancho ☐ Other

Date of Survey 6/21/2019

## COORDINATES (Optional)

N. \_\_\_\_\_ E. \_\_\_\_\_  
Elevation \_\_\_\_\_  
Units ☐ Metric ☐ U.S. Survey Foot  
Horizontal Datum \_\_\_\_\_  
Zone \_\_\_\_\_ Epoch Date \_\_\_\_\_  
Vertical Datum \_\_\_\_\_  
☐ Complies with Public Resources Code §§8801-8819  
☐ Complies with Public Resources Code §§8890-8902

PLS Act Ref.: ☒ 8765(d) ☐ 8771 ☐ 8773 ☐ Other:  
Corner/  
Monument: ☐ Left as found ☒ Established ☐ Rebuilt ☐ Pre-Construction  
☐ Found and tagged ☐ Reestablished ☐ Referenced ☐ Post-Construction

Narrative of corner identified and monument as found, set, reset, replaced, or removed:  
☒ See sheet #2 for description(s):

## SURVEYOR'S STATEMENT

This Corner Record was prepared by me or under my direction in conformance with  
the Professional Land Surveyors' Act on JUNE 28, 2019

Signed Paul O. Webb (P.L.S. or R.C.E. No. 5530)



## COUNTY SURVEYOR'S STATEMENT

This Corner Record was received February 4, 2020  
and examined and filed FEB 04 2020

Signed D. Ian Wilson P.L.S. or R.C.E. No. 7010

Title ALAMEDA COUNTY SURVEYOR  
County Surveyor's Comment \_\_\_\_\_

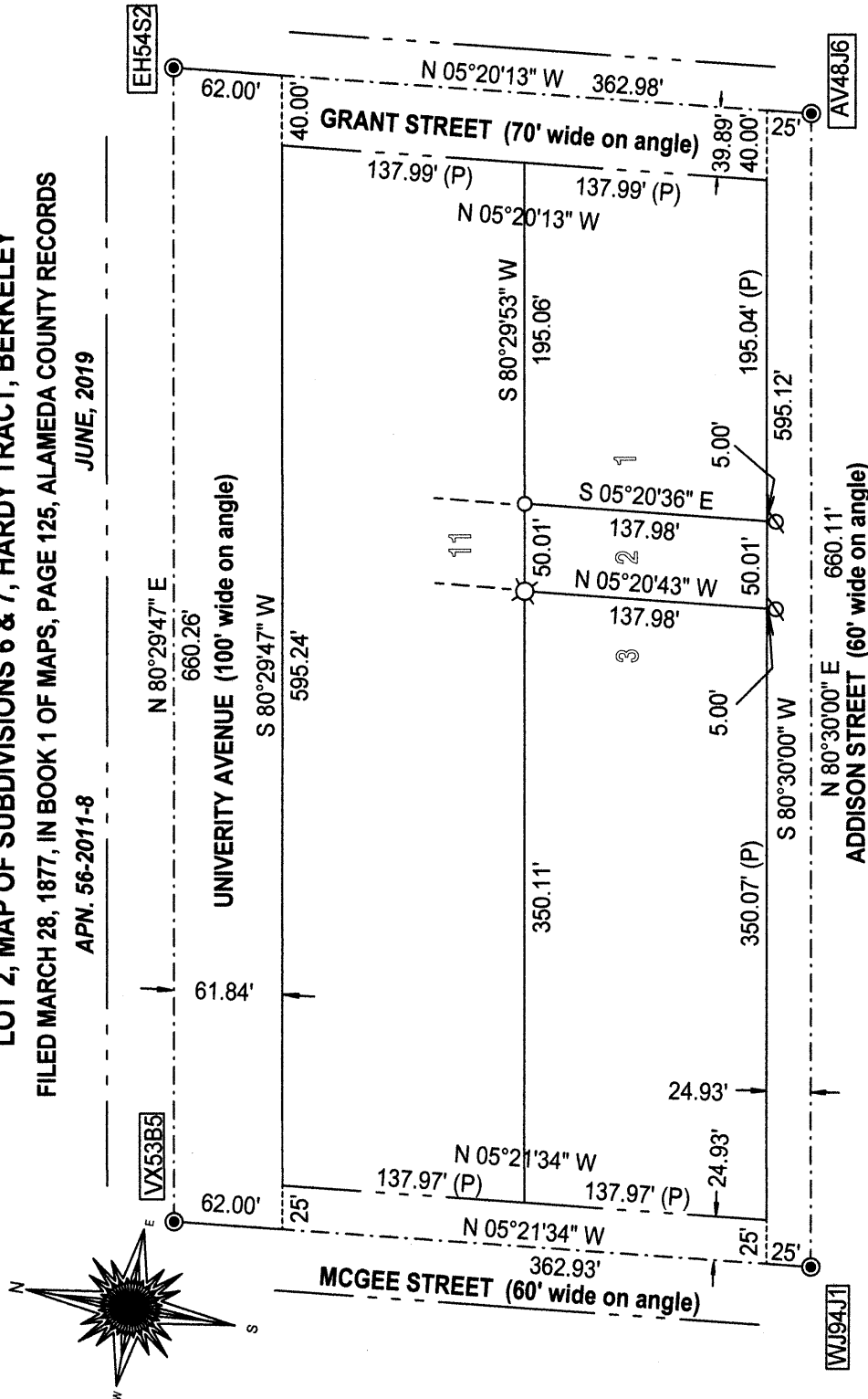


**LOT 2, MAP OF SUBDIVISIONS 6 & 7, HARDY TRACT, BERKELEY**

FILED MARCH 28, 1877, IN BOOK 1 OF MAPS, PAGE 125, ALAMEDA COUNTY RECORDS

APN. 56-2011-8

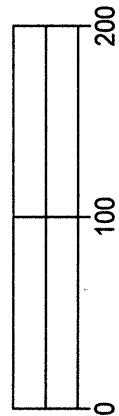
JUNE, 2019



**LEGEND:**

- found City of Berkeley monument in well
- set 5/8" rebar with cap PLS 5530
- set nail and tag PLS 5530 on fence rail 1.2' up
- set nail and tag PLS 5530 in sidewalk 5' offset to property corner as N 80°30'00" E.
- (P) prorated record distance
- AA##A# Alameda County monument ID system (Pta...) typical

SCALE: 1 INCH = 100 FEET



**BASIS OF BEARINGS:**

The line between City of Berkeley monuments on Addison Street taken as N 80°30'00" E.