

PARCEL MAP 3600

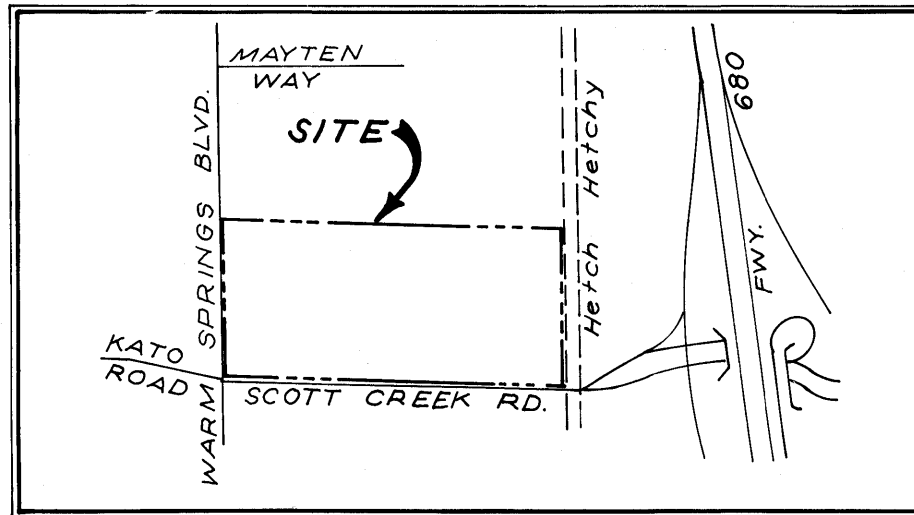
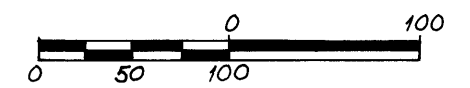
CITY OF FREMONT, ALAMEDA COUNTY, CALIFORNIA

CONSISTING OF 2 SHEETS

CREEGAN & D'ANGELO
CONSULTING ENGINEERS
FREMONT, CALIFORNIA

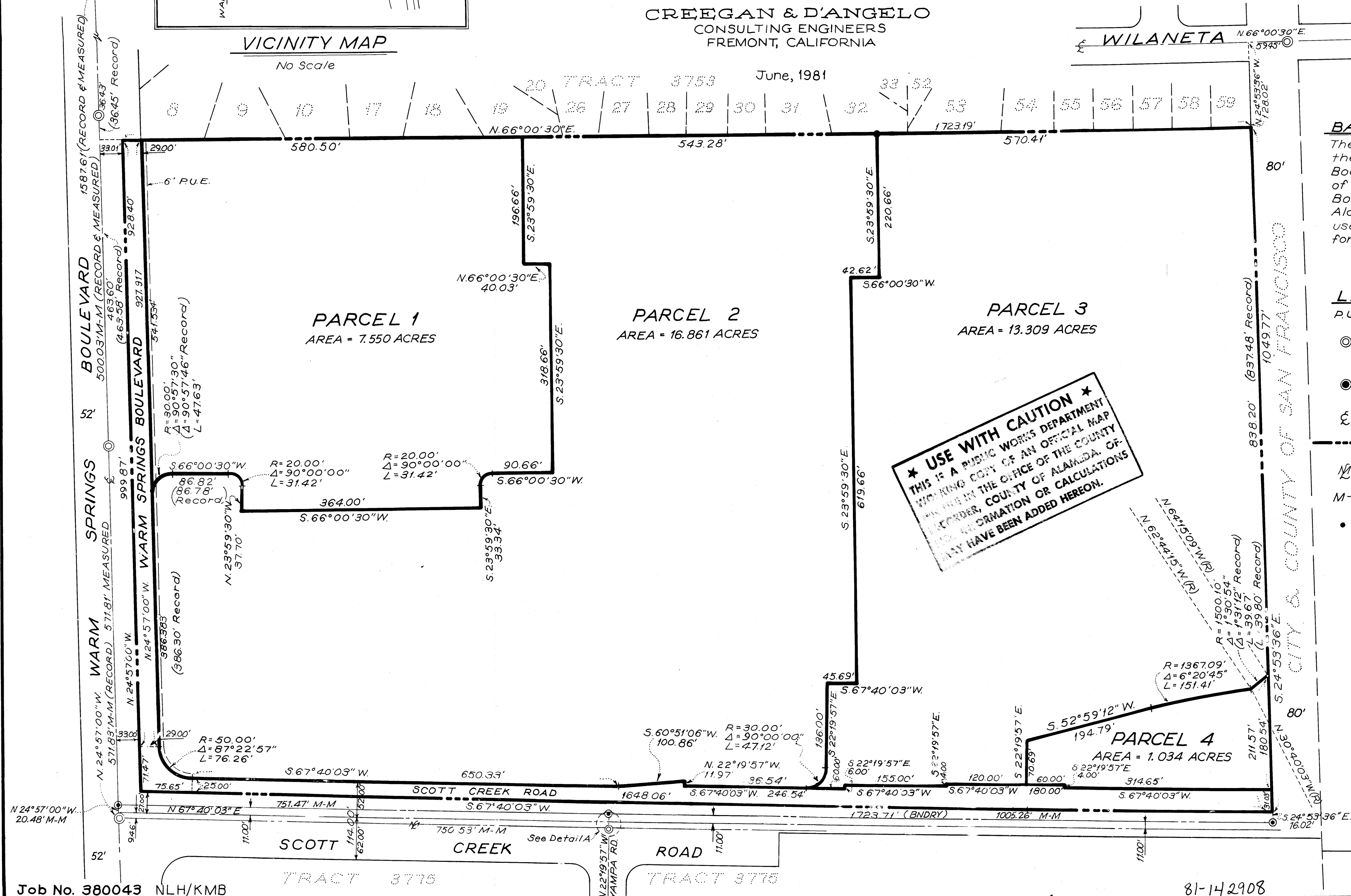
Scale:

1" = 100'



VICINITY MAP

No Scale

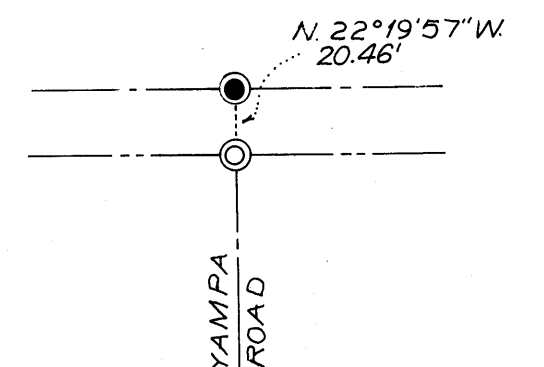


BASIS OF BEARINGS

The bearing N. 24° 57' 00" W. of the centerline of Warm Springs Boulevard as shown on the map of Tract 3753, recorded in Book 95 at Pages 38-42 Alameda County Records was used as the Basis of Bearings for this map.

LEGEND

- P.U.E. Public Utility Easement
- Found Standard City Monument
- Standard City Monument Set
- Centerline
- Parcel Map Boundary Line
- Monument Line
- M-M Monument to Monument
- 3/4" Iron Pipe Set



DETAIL A

Job No. 380043 NLH/KMB

PM 3600/
Sheet 2 of 2 Sheets

filed 8-21-81

128/70 128/70